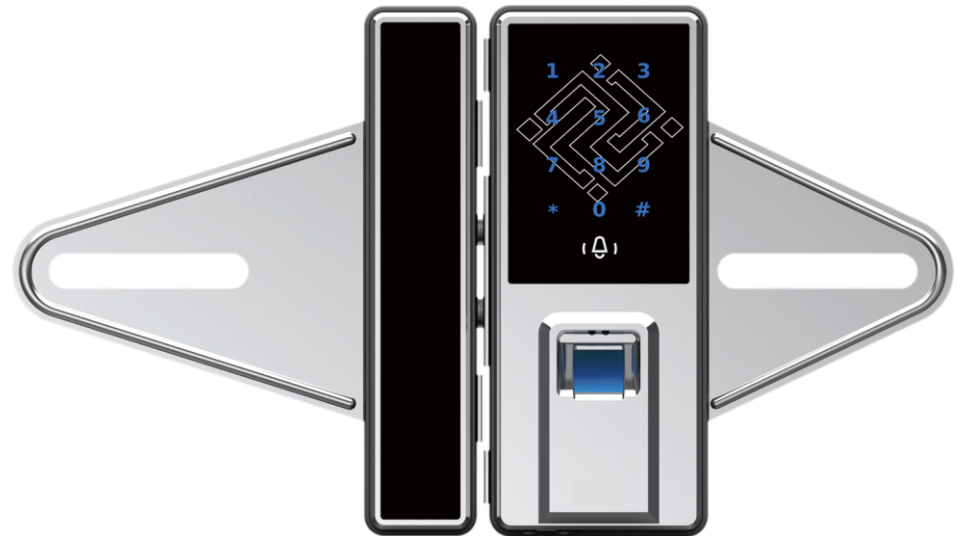


# User Manual Of Smart Lock For Glass Door



# Catalogue

1.Preface.....	1
2.Configuration.....	2
3.Demension.....	3
4.Features.....	3
5.Programming(Setting).....	5
6.Unlocking/Locking Operation.....	8
7. Package Bill.....	9
8.FAQ.....	10
9.Notice.....	11
10.Parameters and Specification.....	12

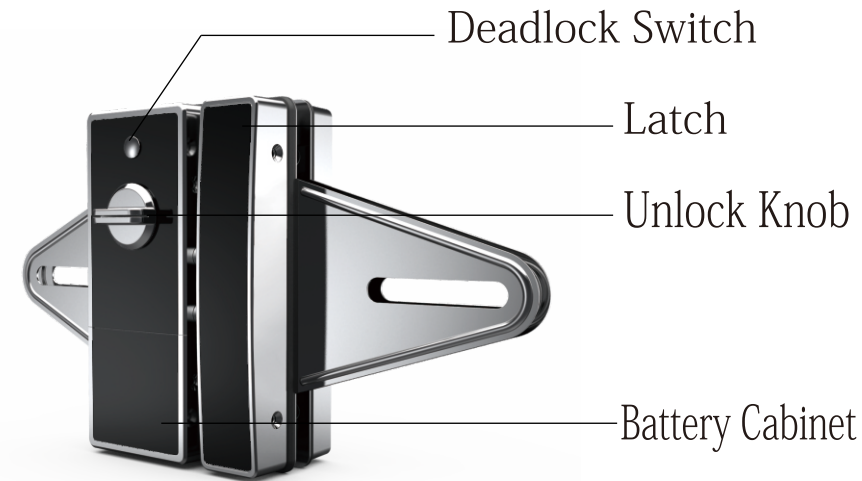
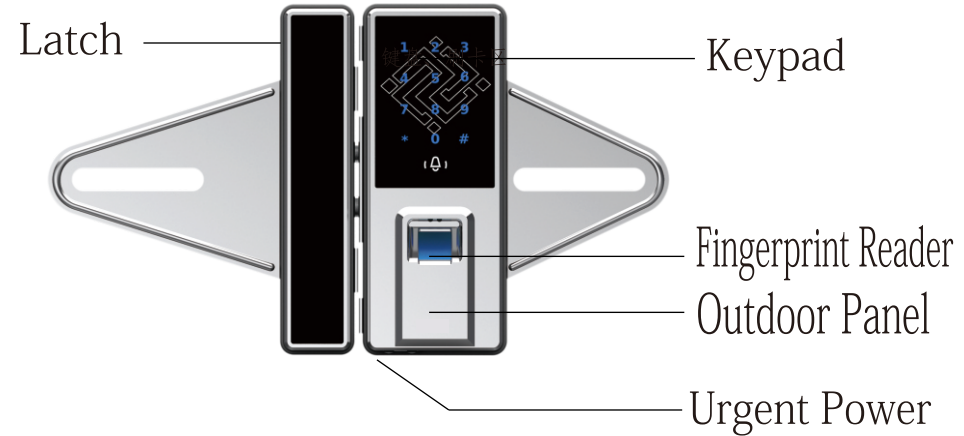
# 1.Preface

## About This Manuall

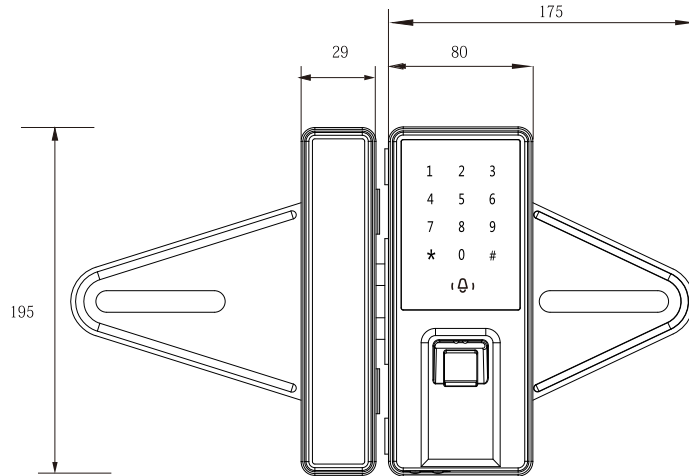
This manual introduces the fingerprint lock features,installations and programming,etc.For th fingerprint lock installation,see the animated installation instructions.

Our products are subject to update from time to time, so our company will neither make a commitment to guarantee the consistency between the actual products and this document, nor assume any responsibility for any dispute arising out of the discrepancy between the actual technical parameters and this manual. This document is subject to change without prior notice.

# 2.Configuration



### 3.Dimension



### 4.Features

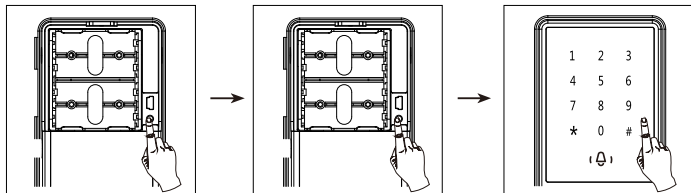
- Unlock by fingerprint/card/password and remote/mobile(optional).
- Password:set it by numbers(up to 16 digits),safe&reliable against theft.
- Convenient management on card/password/remote(set/add/del key).
- Deadlock indoors.
- Alarm against error(illegal card/wrong password)
- Auto alarm/mobile alarm against force open.

- Keypad with backlight:can login numbers even in night and Shadow.
- Remote:unlock by remote in range of 30m even with obstacle.
- Power saving:battery used for above 1year,and alarm when low battery.
- Excellent quality: made of alloy for firm structure;authorized by official Security dept.with quality guarantee.
- Fast/timely sevice:after service availabe by our service center.
- Restaurant\hotel\house\villa\apartment\dormitory\office building\college\hospital\training centre.

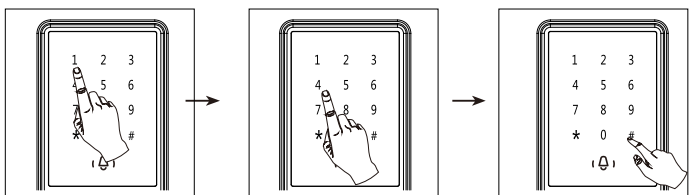
# 5.Programming(Setting)

## (1).Change Super-Password

- ①.Open battery cover
- ②.Press reset button
- ③.Enter 123456 + # Button.

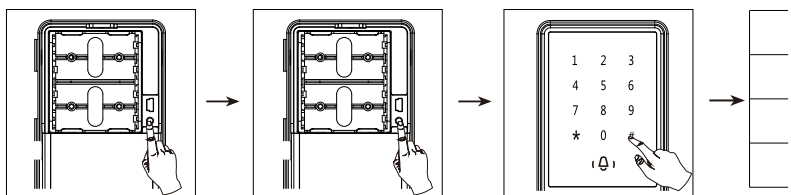


- ④.Press 1 enter key menu.
- ⑤.Press 4
- ⑥.Enter new code + # as Super-Password.

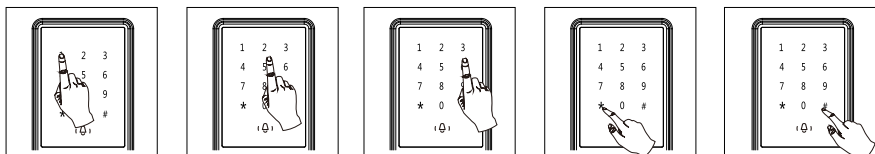


## (2).Main Menu

- ①.Open battery cover.
- ②.Press reset button.
- ③.Enter super-password + # button.



Press: 1For Key Menu    2 for function menu    3 for device link menu    \* button for back    # button for page down



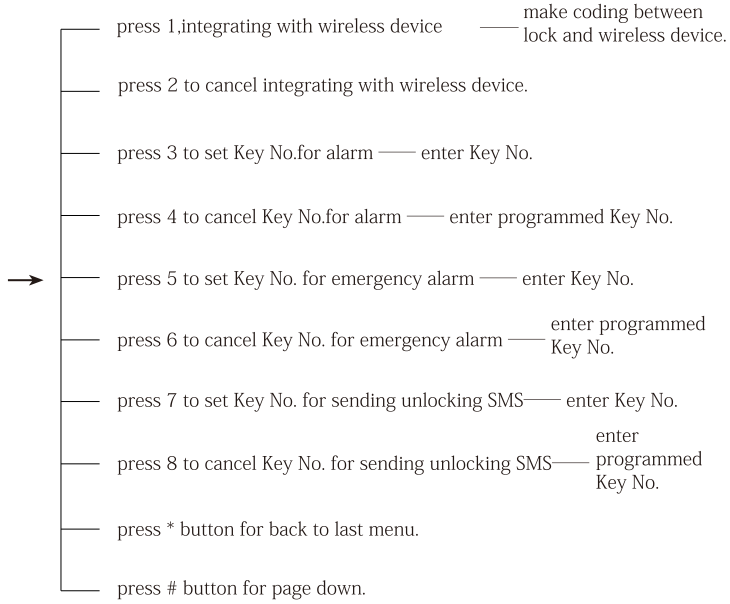
Press 1 enter key menu

- press 1,set new key → enter key No. → read fingerprint/card or enter keypad code or press remote to be programmed as new key.
- press 2,cancel key → read programmed fingerprint/card/keypad code/remote.
- press 3,cancel key by Key No. → enter Key No.
- press 4,chang super-password → enter new super-password (3-14 digit).
- press \* button,back to last menu.
- press # button,to page down.

Press 2 enter function menu

- press 1 to set auto-locking function.
- press 2 to set manual locking function.
- press 3 to set mute.
- press 4 to cancel mute.
- press 5 to set multi-key unlocking function → enter all Key No.
- press 6 to cancel multi-key unlocking function → enter all Key No.
- \*press 7 to check unlock record → lock will speak out all the unlock record.
- press 8 to set time → enter time.
- press 9 to default setting.
- press \* button to back last menu.
- press # button to page down.

\*Press 3 for device link



Notice:

- (1).The default super-password is 123456.
- (2).when set new key,fingerprint/RFID card/keypad code can be set as key,also remote and mobile code which is optional.
- (3).when programming(setting) succeeded,lock will send out chord' di li li' ,if no operation during programming menu,lock will logout menu automatically.You have to press reset button + super-password + # button to logon needed menu.
- (4).When set multi-key,any key belong to multi-key can't be used for unlocking individually.It need to use 2 keys for unlocking,even mutli-key has more than 2 keys,only need to use 2 of them.
- (5).when set key no.for alarm,using this key,unlocking is unavailable,and lock will send remote alarm signal to linked device.
- (6).when set key no.for sending unlocking SMS,using this key,unlocking is available,lock will send SMS to linked device.

- (7).when set key no.for emergency alarm,using this key,unlocking is available,lock will send SMS to linked device.
- (8).Ahead of function stating with \* mark,it is optional function,which need pay extra cost.The cost can be consulted from our marketing department.

## 6.Unlocking/Locking Operation

- (1).Unlocking Outdoors:enroll fingerprint/RFID card/keypad code/remote(optional),then unlocking OK.
- (2).Locking Outdoors
  - (a).If auto-locking switch activated,then close door 3 senconds later,lock will be auto-locked.
  - (b).If auto-locking switch not activated,press \* button for locking.
- (3).Unlocking Indoors:turn the unlock knob for it.
- (4).Locking Indoors
  - (a).If auto-locking switch activated,then close door 3 seconds later,lock will be auto-locked
  - (b).If auto-locking switch not activated,turn the unlock knob for locking.
- (5).Deadlock:when deadlock button activated.From outdoors,all key can not open the lock except the super-password,from indoors,the user can turn the unlock knob for unlocking.

## 8.FAQ

## 7.Package Bill

Name	Notice	Unit(piece)	Quantity
Scress Kit	special for glass door	bag	1
outdoor lock panel		piece	1
indoor lock panel		piece	1
battery cover		piece	1
patch cord		piece	1
remote	optional	piece	
fixing plate		piece	1
fix mat for panel		piece	2
fix mat for latch		piece	2
latch	with inside magnet	piece	1
mobile unlocking module	optional		
audio play	optional		
GSM module	optional		
RFID card			3

Problem	Reason	Solution
Key not working except RFID card	① battery no power ② in deadlock status ③ others	① change battery ② make deadlock invalid ③ contact our after-sale service
Read RFID,it has sound but unlocking not work	① reader cable loose ② in low battery power	① user other key to open lock ② fix the reader cable or change battery
need to cancel the programmed key	key lost,the user changed or the staff resign	programme new key as per the programming(setting) operation
fingerprint reading not work	① fingerprint unclean ② fingerprint reader unclean ③ others	① make your fingerprint clean ② make fingerprint reader clean ③ contact our after-sale service
auto-locking not work	① battery used up ② auto-locking switch not activated	① change battery ② activate the auto-locking switch
programme key not work	① super-password incorrect ② programming way incorrect ③ capacity of card and keypad code > 65pcs ④ capacity of fingerprint >162pcs	① enter correct super-password ② doing correct programming way ③&④cancel some unnecessary key

## 9. Notice

(1). Keep the password concealed.

Before using, press originate button for originating to ensure all the previous record cancelled. Set the key by password/card/remote again.

(2). Set and change the password periodically.

Set and change the password periodically against the password revealed and criminal.

(3). Keep the RF card and remote carefully.

When RF card and remote miss, cancel the matched setting on time.

(4). Pay much attention to cleaning the product.

Product will be in trouble when water leak into the panel.

(5). Do not repeat error operation much times.

No keypad operation with sliding the slip cover 5 times/login wrong password 5 times /unlock by illegal card 5 times, will send

alarm for 30s, then lock be deadlock for 1m which any operation be invalid.

(6). Do not disassemble the product.

When in trouble, do not repair it privately as its complicated structure and PCB, otherwise will make the item worse. Without specialist for repair, contact our after-sale service centre.

## 10. Parameter and Specification

10.1. power: door lock uses 4 pieces AA alkaline battery, work voltage ranged in 4.0V-6.5V. Remote uses 1 piece 12V alkaline battery (same as battery used for automobile remote).

10.2. Door PCB and remote PCB have anti-connection function.

10.3. Lock panel size: 195mm(L)X175mm(W)X87mm(H)

10.4. Latch size: 195mm(L)X29mm(W)X87mm(H)

10.5. Urgent charge : has electrode on outdoor panel, support 6-9V DC.

10.6. Low voltage alarm:  $4.4 \pm 0.2V$  (door lock).

10.7. Static current: for door lock  $\leq 20\mu A$ , for remote  $\leq 1\mu A$ .

10.8. Work current: for door lock  $\leq 200mA$ , for remote  $\leq 50mA$ .

10.9. Work temperature:  $-20^{\circ}C$ - $55^{\circ}C$ .

10.10. Storage temperature:  $-30^{\circ}C$ - $70^{\circ}C$ .

10.11. Work humidity: work normally under 93%RH.

10.12. Average work time without disturb:  $\geq 25,000h$ .

10.13. When power exhausted, key record will be saved.

10.14. Against interference from RF magnetic field: under 80MHz-1000MHz (adjusted frequency: 1KHz, adjusted degree: 80%) interference, testing field power: 10V/m. No error operation exists during test, while work normally after test.

10.15. Against disturb from static discharge: can afford 15k testing discharge from mute. No error operation/ temporal invalid function exists during test, while work normally after test.

10.16. Drive time of motor: clockwise and anticlockwise rotating need 3s in total. Light coupler will check the motor at place or not within 3s. When located at place, stop rotating, otherwise alarm will be sent.