



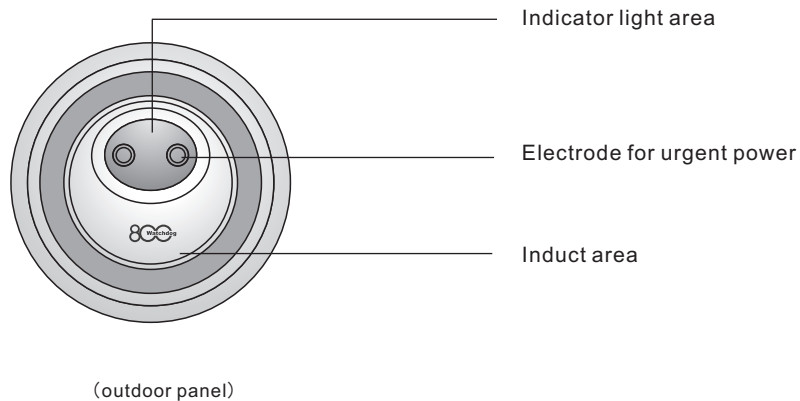
**Watchdog B1** *UNLOCK BY WISDOM*  
**Intelligent anti-theft lock**

**USERS'MANUAL**

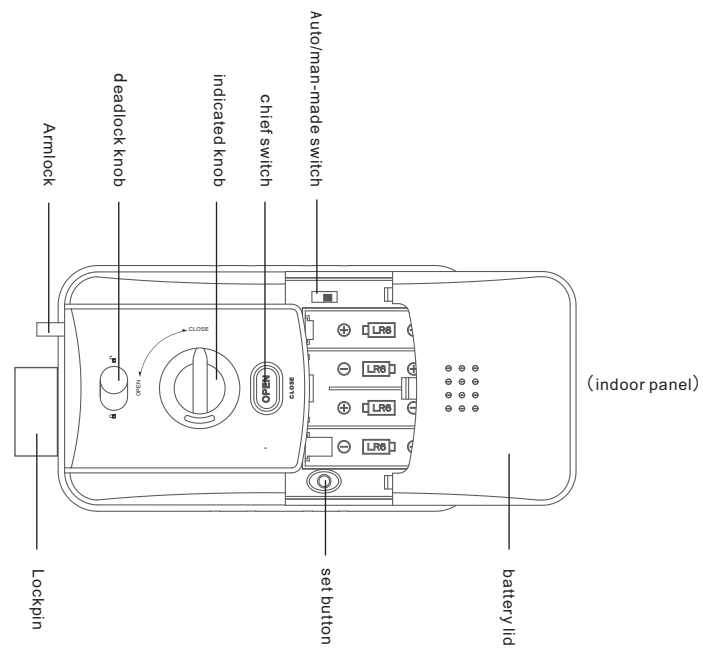
# CONTENTS

1. Every parts name and its function. ....	01
1.1 Lock panel. ....	01
1.2 Function Introduction. ....	03
2. Installation Figure. ....	04
3. Product's Features. ....	06
4. Outdoor Operation-key. ....	07
4.1. How to set card and remote as key. ....	07
4.1a. Set main card. ....	07
4.1b. Set sub-card. ....	08
4.1c. Set remote. ....	09
4.1d. Cancel sub-card. ....	10
4.1e. Cancel remote. ....	11
4.1f. Cancel all sub-card and remote. ....	12
4.1g. Cancel main card. ....	13
4.2. How to use card as key. ....	14
4.3. How to use remote as key. ....	15
5. Indoor Operation- open/close. ....	16
6. About power. ....	18
7. Basic parameters and technical Specification. ....	20
8. Notice. ....	22
9. Mobile alarm system. (for user's option) ....	24







1.1 Lock panel.(lock panel figure)



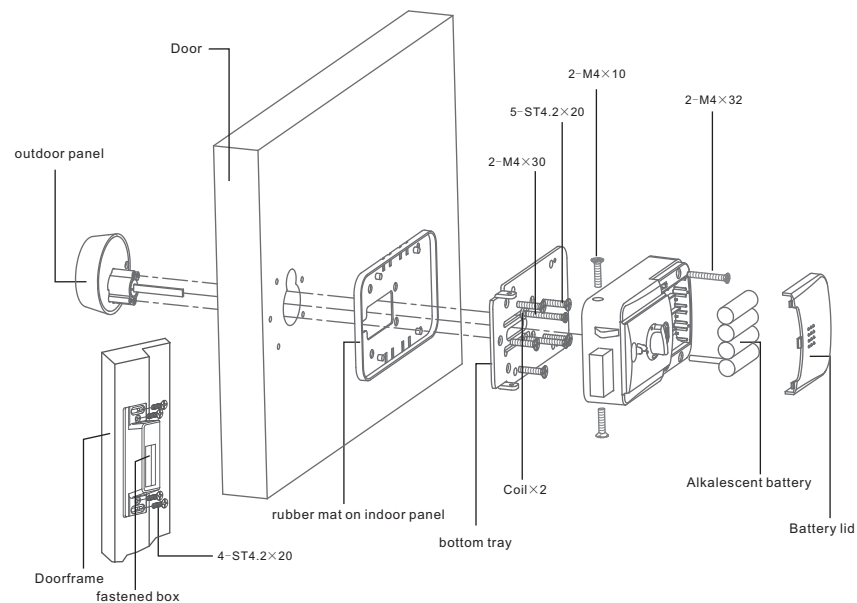
1.1 Lock panel.(lock panel figure)



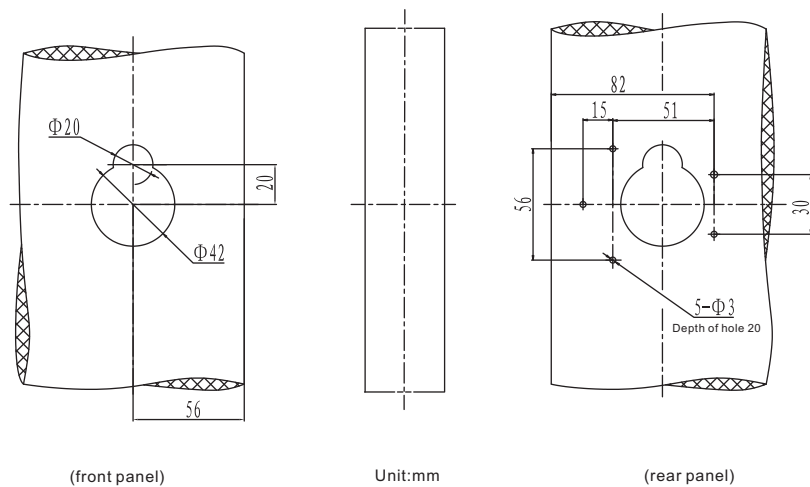
## 1.2 Function Introduction

	Chief Switch for open/close the door.
	Set button for set/change/cancel the key.
	Auto/man-made switch for lock. Turn left, will lock automatically When close the door; Turn right, will not lock automatically when Close the door unless you press the chief switch.
	Deadlock knob: make deadlock by turning the knob, then any operation outdoors will be invalid.
	Indicated knob, show the lock status after operation on the chief switch
	Origin button inside the PCB: press 3s, cancel all the data record on the PCB, also delete all keys granted by cards/remotes.

## Installation Figure(lock panel figure)



## Installation Figure(lock panel figure)



(front panel)

Unit:mm

(rear panel)

## Product's Features

## Convenient &amp; simple

- Unlock by card/remote.
- Convenient management on card/remote(set/add/del key).
- Deadlock indoors.
- Alarm against error(illegal card/remote).
- Auto alarm/mobile alarm against force open.
- Auto lock:lock automatically when close the door.

## Security &amp; power saving

- Remote:unlock by remote in range of 30m even with obstacle.
- Power saving:battery used for above 1year,and alarm when low battery.
- Excellent quality: made of alloy for firm structure;authorized by official Security dept.with quality guarantee.
- Fast/timely sevice:after service availabe by our service center nationwide.

## Applied location

- Restaurant\hotel\house\villa\apartment\dormitory\office building\college\hospital\training centre.

## 4.1.How to set card and remote as key (4.1a.Set main card)

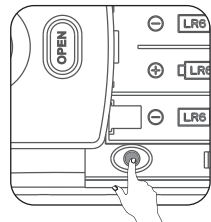
## 4.1a.Set main card

※ Before setting,confirm the data record originated.

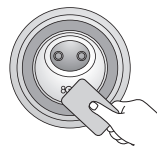
Press"set"button 1time,place the main card near the inducted area on the outdoor panel.

When succeed,chord will be sent out.

## Setting process



1.Open battery lid on the indoor panel,press"set"button 1time.



2.Place main card near the inducted area on the outdoor panel.

Notice:One lock match only 1main card.If need change, cancel it first,then set again.Once no any operation 8s before above process,Setting will logout and be invalid.

## 4.1.How to set card and remote as key (4.1b.Set sub-card)

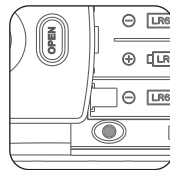
## 4.1b.Set sub-card

※ The total quantity of cards and remotes should be less than 97pieces.

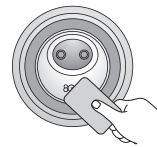
Press"set"button 1time, Place main card near the inducted area,and Login 2digits as code for your option, add"#"key.Then place one or several sub-cards near the inducted area in turn.

The chord will be sent out when each sub-card granted by the main card.Finally confirm it by main card inducting again or 8s interval.

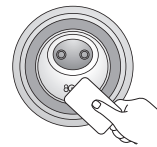
## Setting process



1.Open battery lid on the indoor panel,press"set" button 1time.



2.Place main card near the inducted area on the outdoor panel.



3.Place one or several sub-cards near the inducted area in turn.



4.Main card inducts again or wait 8s interval for confirmation.

Notice:The sub-card without code can not be cancelled by deleting code.  
All sub-cards with same code will be cancelled together by deleting the code.(Read page10 for detail)  
Once no any operation 8s before above process,setting will logout and be invalid.

#### 4.1.How to set card and remote as key (4.1c.Set remote)

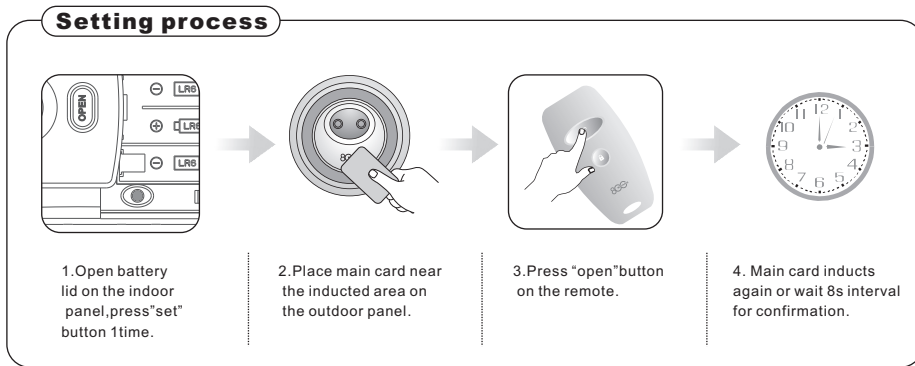
##### 4.1c.Set remote

※ The total quantity of cards and remotes should be less than 97pieces.

Press "set" button 1time, Place main card near the inducted area, and Login 2digits as code for your option, add "#" key.

Then press "open" button on the remote (can match several remotes in turn).

The chord will be sent out when each remote granted by the main card. Finally confirm it by main card inducting again or 8s interval.



Notice: The remote without code can not be cancelled by deleting code.  
All remotes with same code will be cancelled together by deleting the code. (Read page 11 for detail)  
Once no any operation 8s before above process, setting will logout and be invalid.

#### 4.1.How to set card and remote as key (4.1d.Cancel sub-card)

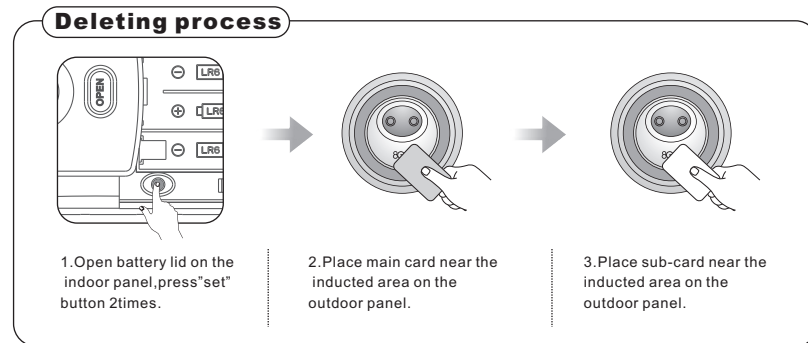
##### 4.1d.Cancel sub-card

※ This operation in condition that sub-card exists.

Press "set" button 2times, Place main card near the inducted area, then place sub-card near the inducted area or login code NO.

(Can cancel several sub-cards in turn). The chord will be sent out when succeed.

Once place main card near the inducted area, cancel operation will logout.



Notice: Once no any operation 8s before above process, setting will logout and be invalid.

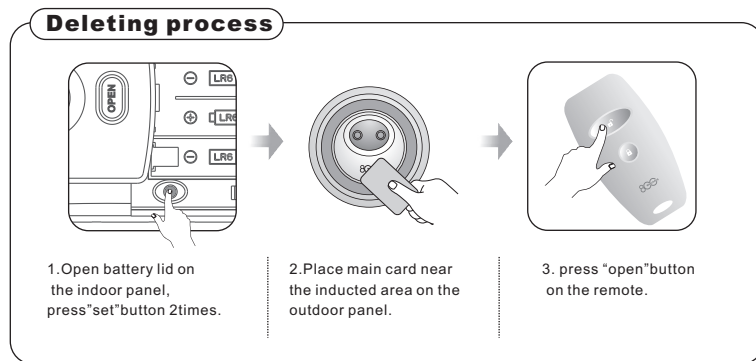
## 4.1.How to set card and remote as key (4.1e.Cancel remote)

## 4.1e.Cancel remote

※ This operation in condition that remote exists.

Press "set" button 2times, Place main card near the inducted area, then press "open" button on the remote or login code NO.  
(Can cancel several remotes in turn).

The chord will be sent out when each succeed. Once place main card near the inducted area, cancel operation will logout.



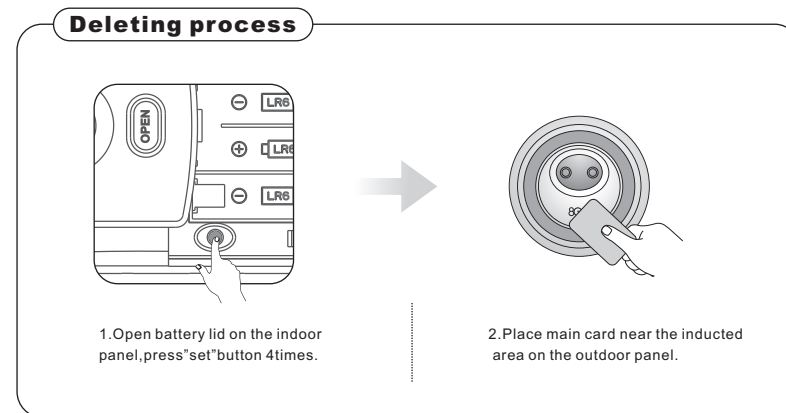
Notice: Once no any operation 8s before above process, setting will logout and be invalid.

## 4.1.How to set card and remote as key (4.1f.Cancel all sub-card and remote)

## 4.1f.Cancel all sub-card and remote

※ This operation in condition that sub-cards/remotes exist.

Press "set" button 4times, Place main card near the inducted area.  
The chord will be sent out when succeed.



Notice: Once no any operation 8s before above process, setting will logout and be invalid.



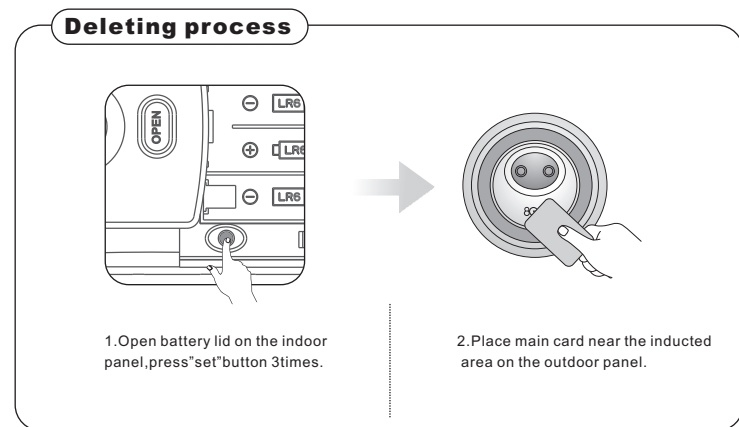
## 4.1.How to set card and remote as key (4.1g.Cancel main card)

## 4.1g cancel main card

※ This operation in condition that main card exist.

Press "set" button 3times, Place main card near the inducted area.

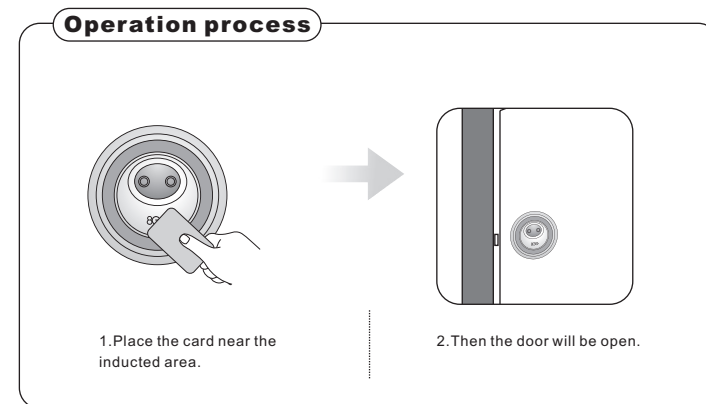
The chord will be sent out when succeed.



Notice:Once no any operation 8s before above process,setting will logout and be invalid.

## 4.2.How to use card as key

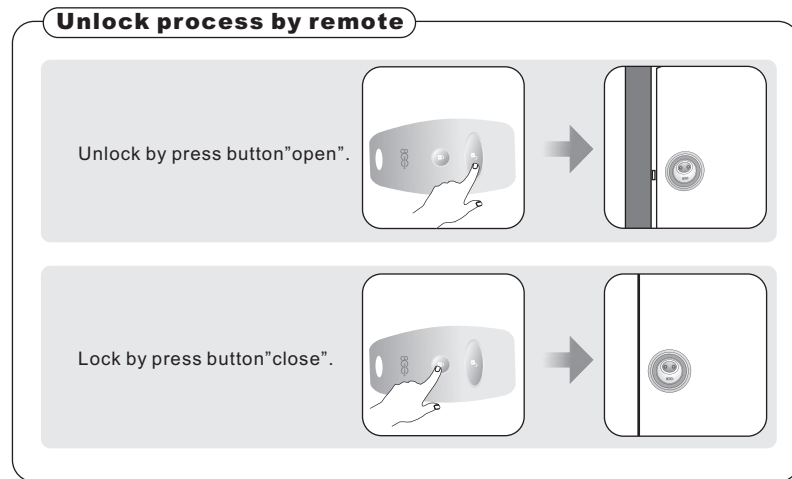
Unlock by card near the inducted area,then chord sending out.



## 4.3. How to use remote as key

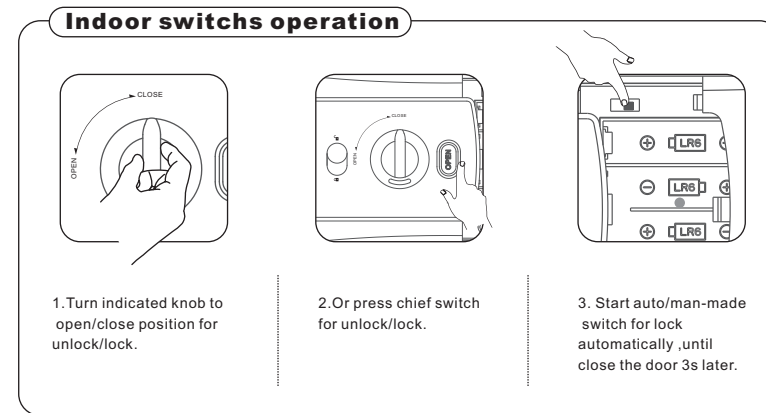
Open the door: under normal signal, press button "open" on the matched remote;

Close the door: under normal signal, press button "close" on the matched remote.



## 5.1. Switchs for open/close

Turn indicated knob (to open/close), or press chief switch for unlock/lock.



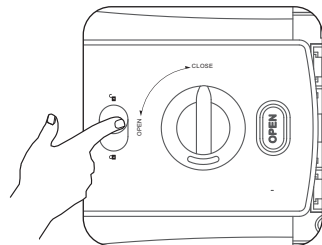
## 5.2. Deadlock knob

## Set deadlock:

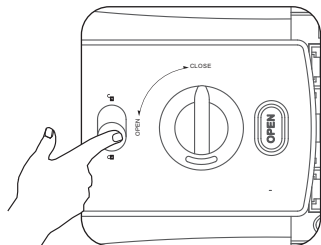
Turn down the deadlock knob for deadlock, then any operation outdoors will be invalid.

Turn up the deadlock knob for unlock, then operation outdoors will be available.

## Deadlock operation



1. Turn the deadlock knob to the open position, deadlock available.



2. Turn the deadlock knob to the close position, deadlock unavailable.

## 6.1. Battery life and usage

- Replace time of battery:

When close the door, sending low-battery chord, the battery should be replaced. Please pay attention to the production time because of physical discharge with overlong time storage.

- Battery usage:

MODEL	SHS-DL781
BATTERY	"AA"SIZE×4PIECES

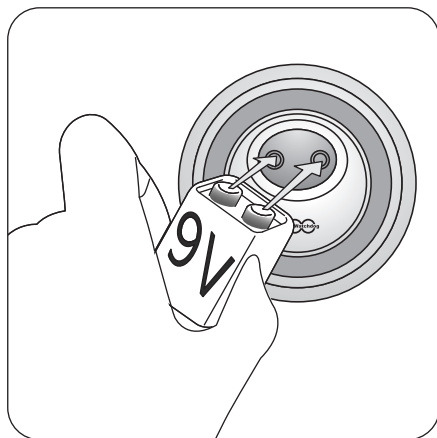
- Notice:



1. If battery still used during replace time, operation should be unavailable. Please replace it timely.
2. Confirm the electrode correct, otherwise work be invalid.
3. Lock will be in trouble if battery discharge/leakage. So make inspection periodically (about 2 times/year).

## 6.2.Recharged by urgent battery(9V)

If 4pcs x 1.5V batteries exhausted,lock can not be open by card/remote.Then use the backup battery(6LR61), connected to the electrode on the outdoor panel.Operation will be available again.



**Operation process of urgent battery recharge**

## 7.1.Parameters and Specification

### 1.Basic parameters

- 1.1.power:door lock uses 4pieces AA alkalence battery,work voltage ranged in 4.0V-6.5V.Remote uses 1piece 12V alkalence battery(same as battery used for automobile remote).
- 1.2.Door PCB and remote PCB have anti-connection function.
- 1.3.Outdoor panel size:65mm(D)X35mm(H)
- 1.4.Indoor panel size: 150mm(L)X90mm(W)X40mm(H)
- 1.5.Urgent charge: has electrode on outdoor panel,support 6-9V DC.
- 1.6.Low voltage alarm: $4.4 \pm 0.2V$ (door lock).
- 1.7.Static current:for door lock $\leq 20\mu A$ ,for remote $\leq 1\mu A$ .
- 1.8.Work current: for door lock $\leq 200mA$ ,for remote $\leq 50mA$ .
- 1.9.Work temperature:-20 $^{\circ}C$ -55 $^{\circ}C$ .
- 1.10.Storage temperature:-30 $^{\circ}C$ -70 $^{\circ}C$ .
- 1.11.Work humidity:work normally under 93%RH.
- 1.12.Average work time without disturb: $\geq 25,000h$ .
- 1.13.When power exhausted,key record sill be saved.
- 1.14.Against interference from RF magnetic field:under 80MHz-1000Mhz(adjusted frequency:1KHz,adjusted degree:80%) interference,testing field power:10V/m.No error operation exists during test,while work normally after test.
- 1.15.Against disturb from static discharge:can afford 15k testing discharge from mute.No error operation/ temporal invalid function exists during test,while work normally after test.
- 1.16.Drive time of motor:clockwise and anticlockwise rotating need 3s in total.Light coupler will check the motor at place or not within 3s.When located at place,stop rotating;otherwise alarm will be sent.


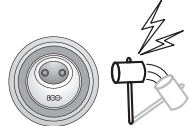
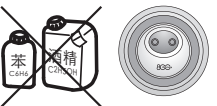
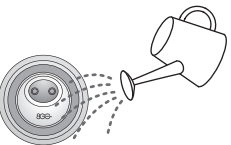
## 7.1.Parameters and Specification

## 2.Requirements on function

- 2.1.Unlock by RF card/password/remote/chief switch on the indoor panel.
- 2.2.Can match one main card,97keys(include sub-cards and remote in total);main card can set/cancel sub-cards,also can cancel remote/open the lock.
- 2.3.The distance between lock and remote can reach above 30m even with obstacle.The remote work when match lock's code,its illegal open rate less than 1/264;Better speed and sensitivity can be available when unlock by remote.
- 2.4.Sensitive unlock by RF card:the interval between read card and unlock less than 0.4s.
- 2.5.Storage temperature:-30℃-70℃.
- 2.6.Alarm against theft:Auto alarm/mobile alarm against force open.
- 2.7.Alarm against error operation:no keypad operation with sliding the slip cover 5times/login wrong password 5times/unlock by illegal card 5times,will send alarm for 30s,then be deadlock for 1m which any operation be invalid.Cancel the alarm by legal card/remote/indoor switch.
- 2.8.Battery inspection function:after put on battery,will be inspected by PCB privately.Indicated light and backlight will flash with chord sending,motor in calm.
- 2.9.Voice for open/close the door:open/close the door,chord will be sent out as an indication.
- 2.10.Deadlock function:start deadlock,any operation outdoors be invalid.When unlock by card/remote,deadlock will be suggested.

## 8.1.Notice

**⚠ WARN**

<p>Do not disassemble and break down the lock privately for repair.</p> 	<p>Do not use hard tool(like hammer) to beat the lock.</p> 
<p>Do not use wet cloth/alcohol/benzene as cleanser when clean the lock.</p> 	<p>Do not let liquid like water leak into the panel.</p> 

## 8.1. Notice

**1. Keep the RF card and remote carefully.**

When RF card and remote miss, cancel the matched setting on time.

**2. Pay much attention to cleaning the product.**

Product will be in trouble when water leak into the panel.

**3. Do not repeat error operation much times.**

No keypad operation with sliding the slip cover 5times/login wrong password 5times/unlock by illegal card 5times, will send alarm for 30s, then lock be deadlock for 1m which any operation be invalid.

**4. Do not disassemble the product.**

When in trouble, do not repair it privately as its complicated structure and PCB, otherwise will make the item worse. Without specialist for repair, contact our after-service centre.

23

## 9. Mobile alarm system (for user's option).

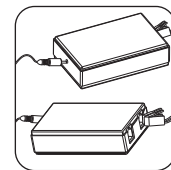
Before setting, make sure:

- A. Lock matched with main card.
- B. Adapter record is originated: open the adapter lid, press "set" button 1 time on the PCB.

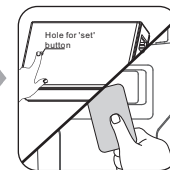
Setting process for lock with mobile function.

1. Connect the adapter to socket by charger.
2. Connect the adapter to cell phone: plug the telephone line into adapter port to finish it. One adapter only connect 1 phone.
3. Connect the signal between the adapter and lock. Originate the adapter record first. After inducting by ungranted card more than 5 times, lock will send alarm voice. Once receiving the alarm signal, the adapter will send succeed chord.
4. Use phone/mobile to call the cell phone connected to the adapter.
5. After getting through, dial target mobile number for alarm, add "\*" on the former phone.
6. After illegal operation on the lock (inducting by ungranted card more than 5 times), if alarm voice sent out from the target mobile, setting is finished.

Notice: adapter only read signal from main card. Lock with changed main card, will not have mobile alarm system, which should be set again.

**Setting process**

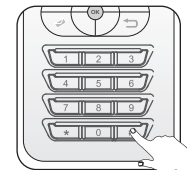
1. connect the adapter to socket and cell phone.



2. originate adapter record first, make illegal operation on lock (by induct illegal card 5 times). When adapter receive alarm from lock, which will send chord, connecting succeed.



3. use phone/mobile to call the cell phone connected to the adapter.



4. After getting through by sending chord, dial target mobile number for alarm, add "\*" on the former phone.

24

# ABOUT US

## Marketing Theory:

Preferred technology, respectable customers, basic credit, sincere cooperation, mutual success.

## Service Theory:

Limitless service, prior customers.

## Company's Target:

Enhance Competitive power, for optimal economic effect.

## Clients Management:

Based on profession, credit & excellence, offer the clients with quality R&D, quality product & quality service, esp. best profits, to establish reliable relationship for long term.

## Partners Management:

Establish long-term strategic cooperate relationship with the suppliers, who own reliable fame and strict quality management system, by win-to-win negotiation, to provide our clients with quality products.

## Company's Prospect:

To win clients' trust & competitors' respect; To become industry's pioneer;

To be excellent firm; To impulse society improvement.

## Company's Communication:

Mutual believe; Mutual respect; Mutual help; Mutual understand.

**Feedback**

