

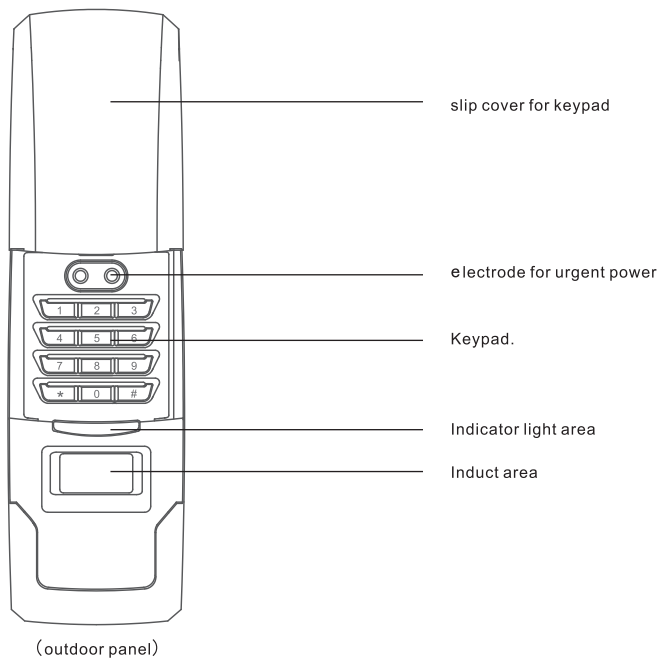


**MP1110** *UNLOCK BY WISDOM*  
**Intelligent anti-theft lock**  
**USERS' MANUAL**

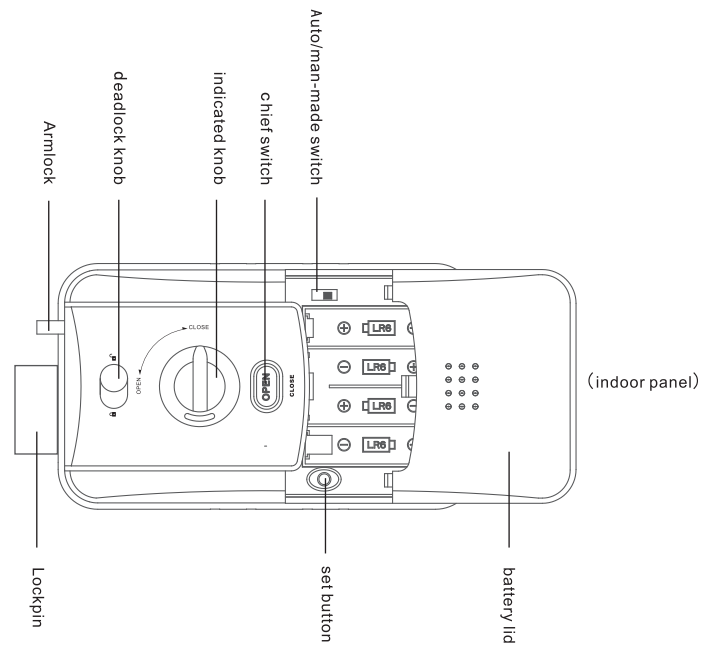
# CONTENTS

1. Every parts name and its function. ....	01
1.1 Lock panel. ....	01
1.2 Function Introduction. ....	03
2. Installation Figure. ....	04
3. Product's Features. ....	06
4. Outdoor Operation-key. ....	07
4.1. How to set password as key. ....	07
4.1a. Set main password. ....	07
4.1b. Set sub-password. ....	08
4.1c. Cancel main password. ....	09
4.1d. Cancel sub-password. ....	10
4.2. How to set card and remote as key. ....	11
4.2a. Set main card. ....	11
4.2b. Set sub-card. ....	12
4.2c. Set remote. ....	13
4.2d. Cancel sub-card. ....	14
4.2e. Cancel remote. ....	15
4.2f. Cancel all sub-card and remote. ....	16
4.2g. Cancel main card. ....	17
4.3. How to use password as key. ....	18
4.4. How to use card as key. ....	19
4.5. How to use remote as key. ....	20
5. Indoor Operation- open/close. ....	21
6. About power. ....	23
7. Basic parameters and technical Specification. ....	24
8. Notice. ....	26
9. Mobile alarm system. (for user's option) ....	28







1.1 Lock panel.(lock panel figure)



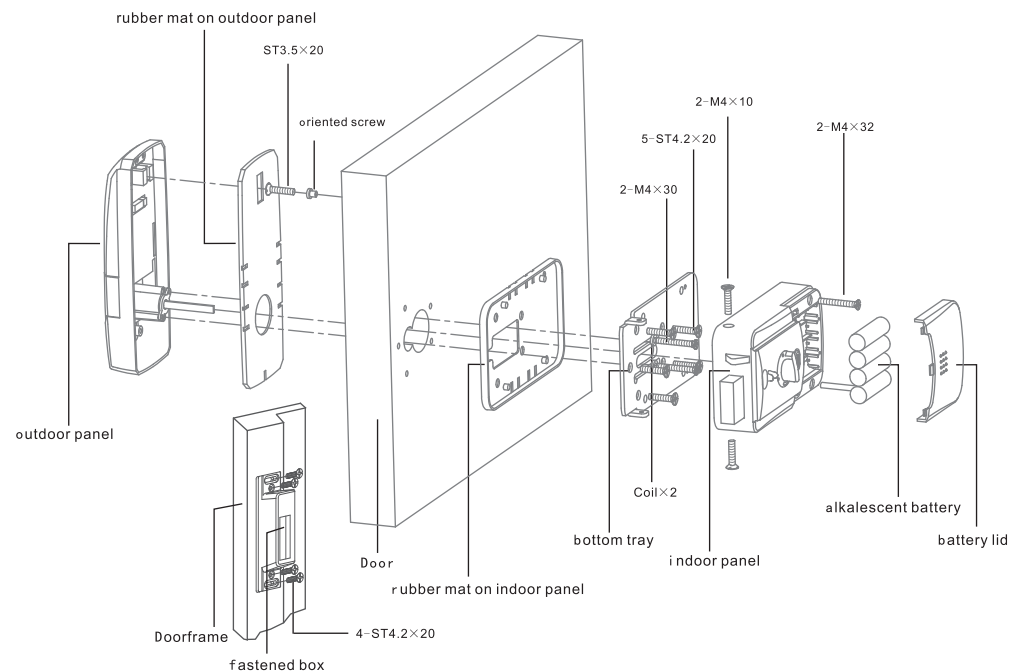
1.1Lock panel.(lock panel figure)



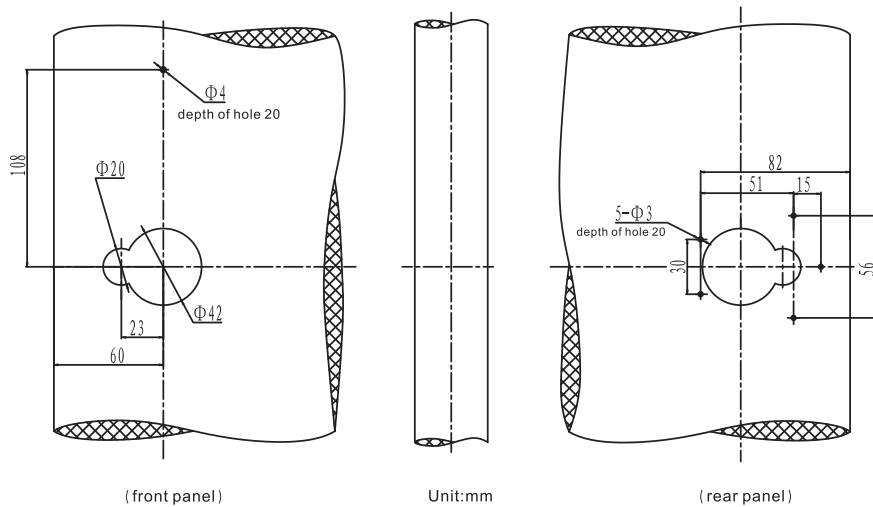
## 1.2 Function Introduction

	Chief Switch for open/close the door.
	Set button for set/change/cancel the key. (Password/card/remote)
 Auto    Man-Made	Auto/man-made switch for lock. Turn left, will lock automatically When close the door; Turn right, will not lock automatically when Close the door unless you press the chief switch.
	Deadlock knob: make deadlock by turning the knob, then any operation outdoors will be invalid.
	Indicated knob, show the lock status after operation on the chief switch
	Origin button inside the PCB: press 3s, cancel all the data record on the PCB, also delete all keys granted by cards/passwords/remotes.

## Installation Figure(lock panel figure)



## Installation Figure(lock panel figure)



## Product's Features

## Convenient &amp; simple

- Unlock by card/password/remote.
- Password:set it by numbers(up to 16 digits),safe&reliable against theft.
- Convenient management on card/password/remote(set/add/del key).
- Deadlock indoors.
- Alarm against error(illegal card/wrong password)
- Auto alarm/mobile alarm against force open.
- Auto lock:lock automatically when close the door.
- Keypad with backlight:can login numbers even in night and Shadow.
- Remote:unlock by remote in range of 30m even with obstacle.

## Security &amp; power saving

- Power saving:battery used for above 1year,and alarm when low battery.
- Excellent quality: made of alloy for firm structure;authorized by official Security dept.with quality guarantee.
- Fast/timely sevice:after service available by our service center nationwide.

## Applied location

- Restaurant\hotel\house\villa\apartment\dormitory\office building\college\hospital\training centre.

## 4.1. How to set password as key (4.1a. Set main password)

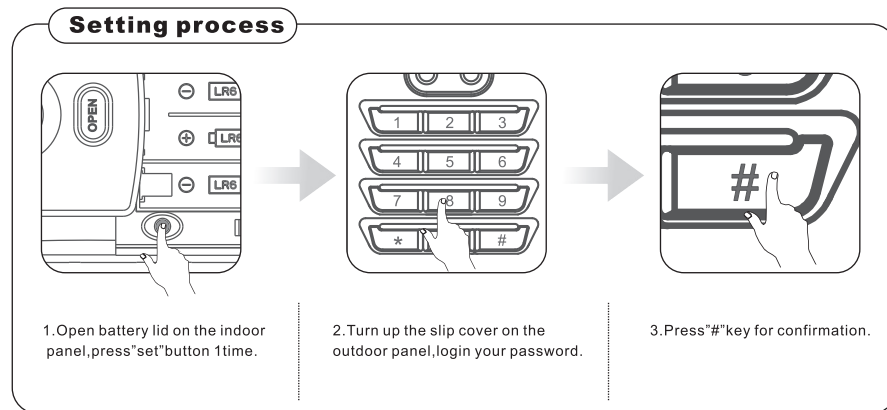
## 1. Password usage

※ Record is originated when lock outgoing from work

## 4.1a. Set main password

Open battery lid on the rear panel, press "set" button 1 time, Login the password on the keypad, which on the front panel, then add "#" key. When succeed, chord will be sent out.

(Password can be set up to 16 digits for your option.)



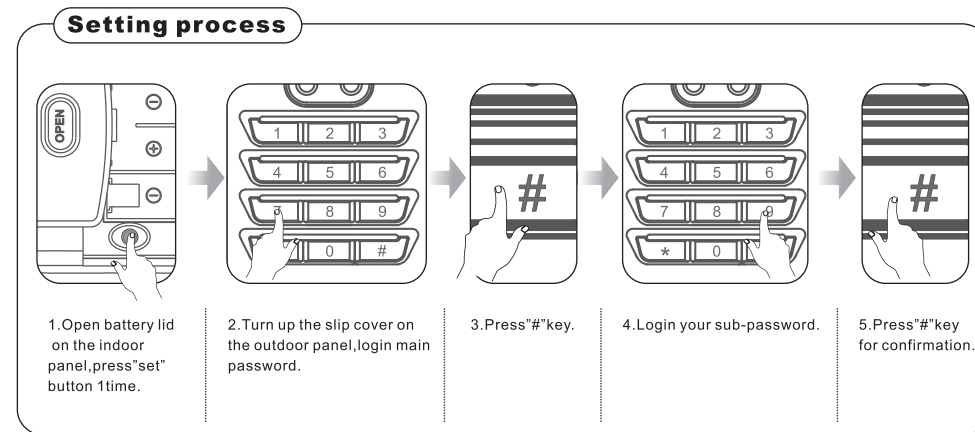
Notice: One lock match only 1 main password. If need change, cancel it first, then set again. Once no any operation 8s before above process, Setting will logout and be invalid.

## 4.1. How to set password as key (4.1b. Set sub-password)

## 4.1b. Set sub-password.

Press "set" button 1 time, login main password, add "#" key; then login your sub-password, add "#". When succeed, chord will be sent out.

(sub-password can be set up to 16 digits for your option).



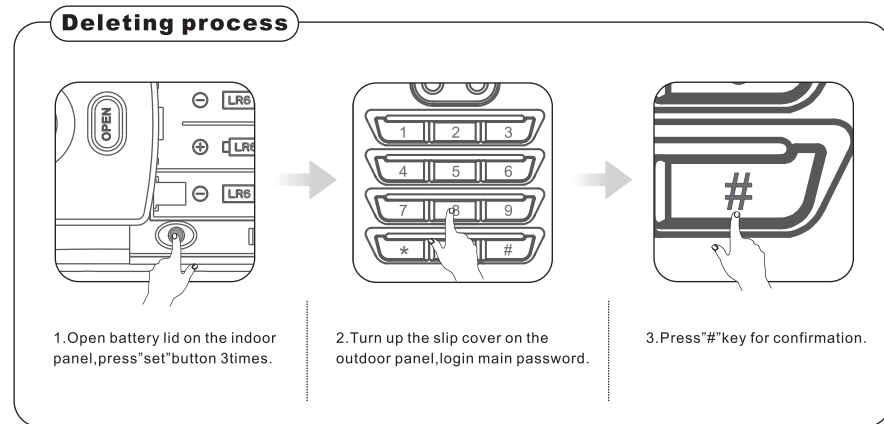
Notice: Once no any operation 8s before above process, setting will logout and be invalid.

## 4.1.How to set password as key (4.1c.Cancel main password)

## 4.1c.Cancel main password.

Press "set" button 3 times, login main password, add "\*" key.

When succeed, chord will be sent out.



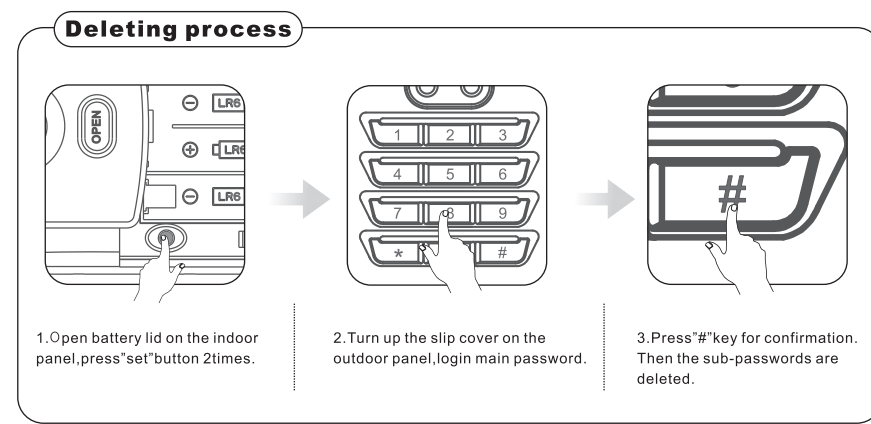
Notice: Once no any operation 8s before above process, setting will logout and be invalid.

## 4.1.How to set password as key (4.1d.Cancel sub-password)

## 4.1d.Cancel sub-password.

Press "set" button 2 times, login main password, add "\*" key.

When succeed, chord will be sent out.



Notice: Once no any operation 8s before above process, setting will logout and be invalid.

## 4.2.How to set card and remote as key (4.2a.Set main card)

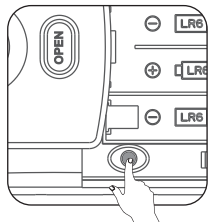
## 4.2a.Set main card

※ Before setting,confirm the data record originated .

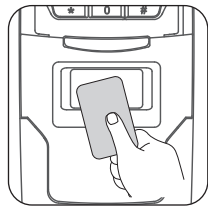
Press"set"button 1time,place the main card near the inducted area on the outdoor panel.

When succeed,chord will be sent out.

## Setting process



1.Open battery lid on the indoor panel,press"set"button 1time.



2.Place main card near the inducted area on the outdoor panel.

Notice:One lock match only 1main card.If need change, cancel it first,then set again.Once no any operation 8s before above process,Setting will logout and be invalid.

## 4.2.How to set card and remote as key (4.2b.Set sub-card)

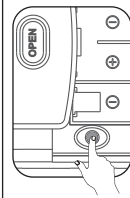
## 4.2b.Set sub-card

※ The total quantity of cards and remotes should be less than 97pieces.

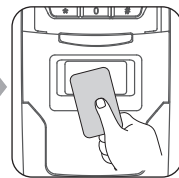
Press"set"button 1time, Place main card near the inducted area,and Login 2digits as code for your option, add"#"key.Then place one or several sub-cards near the inducted area in turn.

The chord will be sent out when each sub-card granted by the main card.Finally confirm it by main card inducting again or 8s interval.

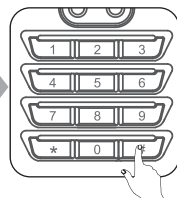
## Setting process



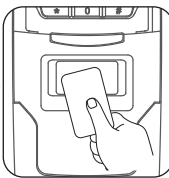
1.Open battery lid on the indoor panel,press"set" button 1time.



2.Place main card near the inducted area on the outdoor panel.



3.Login 2digits as code on the keypad,then add"#"key.



4.Place one or several sub-cards near the inducted area in turn.



5.Main card inducts again or wait 8s interval for confirmation.

Notice:The sub-card without code can not be cancelled by deleting code.  
All sub-cards with same code will be cancelled together by deleting the code.(Read page14 for detail)  
Once no any operation 8s before above process,setting will logout and be invalid.

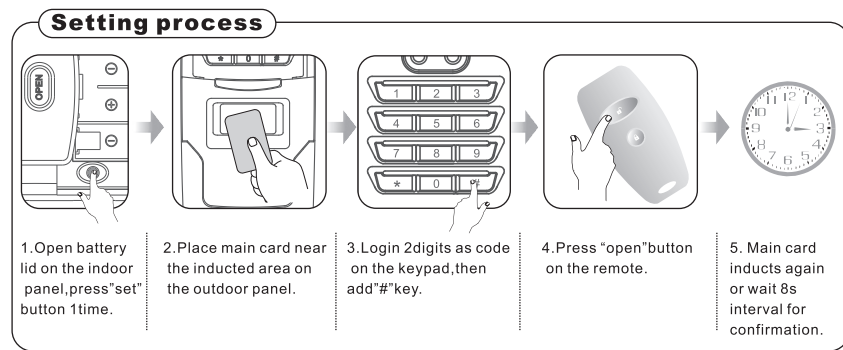


## 4.2.How to set card and remote as key (4.2c.Set remote)

## 4.2c.Set remote

※ The total quantity of cards and remotes should be less than 97pieces.

Press "set" button 1time, Place main card near the inducted area, and Login 2digits as code for your option, add "#" key. Then press "open" button on the remote (can match several remotes in turn). The chord will be sent out when each remote granted by the main card. Finally confirm it by main card inducting again or 8s interval.



Notice: The remote without code can not be cancelled by deleting code.  
All remotes with same code will be cancelled together by deleting the code. (Read page 15 for detail)  
Once no any operation 8s before above process, setting will logout and be invalid.

## 4.2.How to set card and remote as key (4.2d.Cancel sub-card)

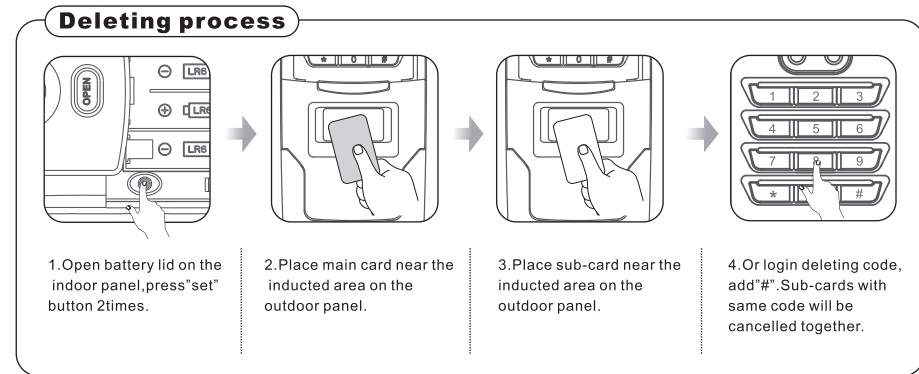
## 4.2d.Cancel sub-card

※ This operation in condition that sub-card exists.

Press "set" button 2times, Place main card near the inducted area, then place sub-card near the inducted area or login code NO.

(Can cancel several sub-cards in turn). The chord will be sent out when succeed.

Once place main card near the inducted area, cancel operation will logout.



Notice: Once no any operation 8s before above process, setting will logout and be invalid.

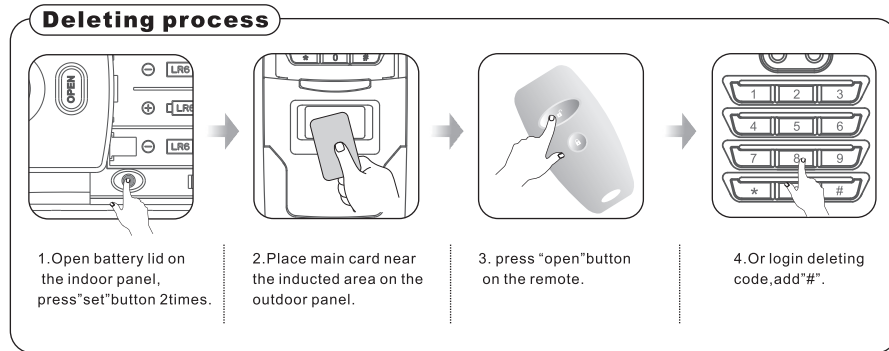
## 4.2.How to set card and remote as key (4.2e.Cancel remote)

## 4.2e.Cancel remote

※ This operation in condition that remote exists.

Press "set" button 2times, Place main card near the inducted area, then press "open" button on the remote or login code NO.  
(Can cancel several remotes in turn).

The chord will be sent out when each succeed. Once place main card near the inducted area, cancel operation will logout.



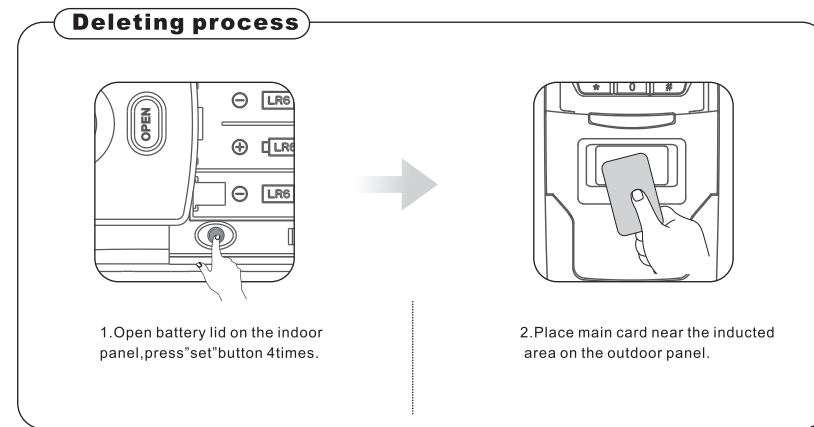
Notice: Once no any operation 8s before above process, setting will logout and be invalid.

## 4.2.How to set card and remote as key (4.2f.Cancel all sub-card and remote)

## 4.2f.Cancel all sub-card and remote

※ This operation in condition that sub-cards/remotes exist.

Press "set" button 4times, Place main card near the inducted area.  
The chord will be sent out when succeed.



Notice: Once no any operation 8s before above process, setting will logout and be invalid.

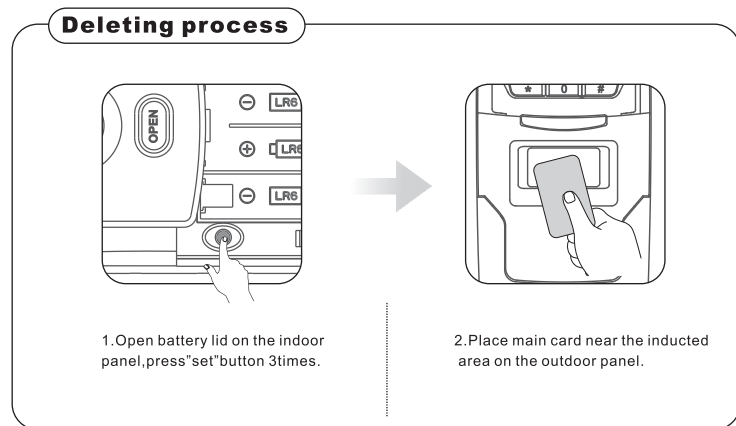
## 4.2.How to set card and remote as key (4.2g.Cancel main card)

### 4.2g cancel main card

※ This operation in condition that main card exist.

Press "set" button 3times, Place main card near the inducted area.

The chord will be sent out when succeed.



Notice:Once no any operation 8s before above process,setting will logout and be invalid.

## 4.3.How to use password as key

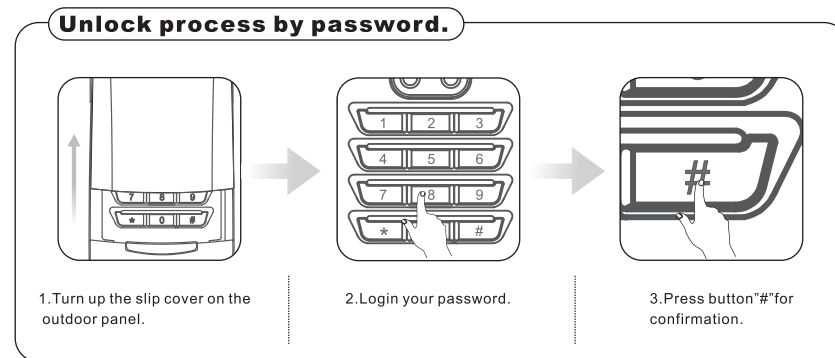
a. Indicated chord.

Unlock by password +button"#",then chord sending out.

b.No indicated chord.(mute)

Press button"#",login password+button"#":unlock the door with mute.Press button"#"again to recover normal status.

c.Press button"\*"for lock.



Notice:Add several digits at random before the real password against theft.If error exists,press button"\*"to logout.

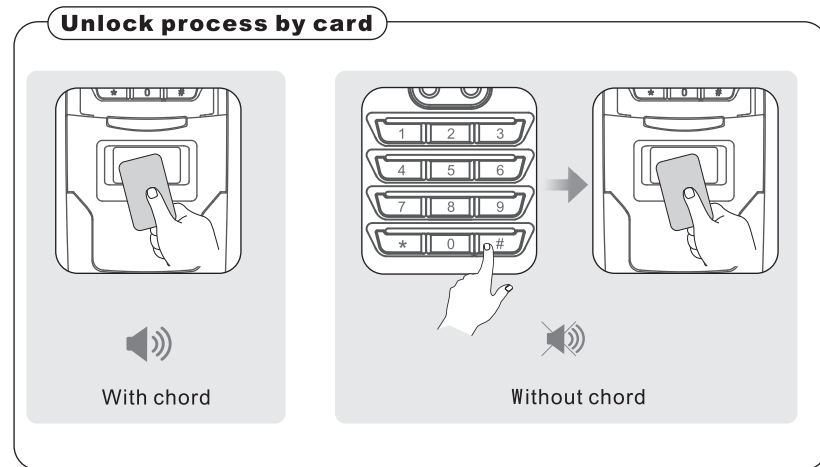
## 4.4. How to use card as key

## A. With indicated chord.

Unlock by card near the inducted area, then chord sending out.

## B. Without indicated chord.

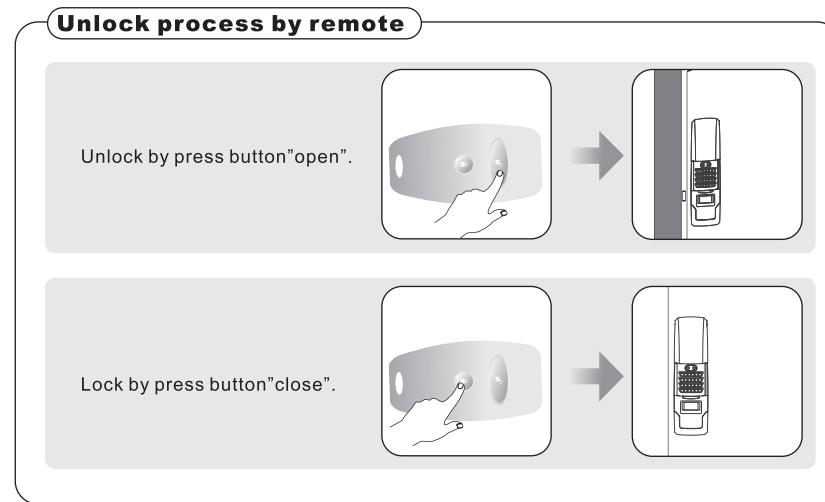
Press button "#", place the card near the inducted area: unlock the door with mute.



## 4.5. How to use remote as key

Open the door: under normal signal, press button "open" on the matched remote;

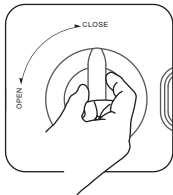
Close the door: under normal signal, press button "close" on the matched remote.



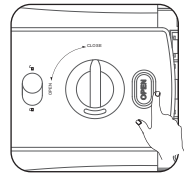
## 5.1. Switches for open/close

Turn indicated knob(to open/close),or press chief switch for unlock/lock.

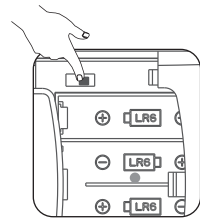
## Indoor switches operation



1. Turn indicated knob to open/close position for unlock/lock.



2. Or press chief switch for unlock/lock.



3. Start auto/man-made switch for lock automatically ,until close the door 3s later.

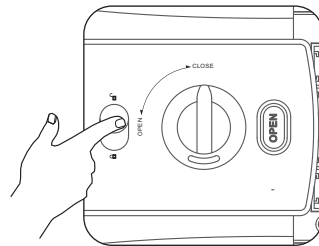
## 5.2. Deadlock knob

Set deadlock:

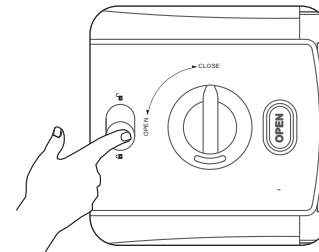
Turn down the deadlock knob for deadlock,then any operation outdoors will be invalid.

Turn up the deadlock knob for unlock,then operation outdoors will be available.

## Deadlock operation



1. Turn the deadlock knob to the open position,deadlock available.



2. Turn the deadlock knob to the close position,deadlock unavailable.

## 6.1. Indoor battery and outdoor urgent battery.

- Replace time of battery:

When close the door, sending low-battery chord, the battery should be replaced. Please pay attention to the production time because of physical discharge with overlong time storage.

- Battery usage:

MODEL	SHS-DL781
BATTERY	"AA" SIZE × 4PIECES

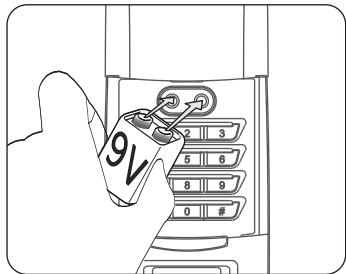
- Notice:



1. If battery still used during replace time, operation should be unavailable. Please replace it timely.
2. Confirm the electrode correct, otherwise work be invalid.
3. Lock will be in trouble if battery discharge/leakage. So make inspection periodically (about 2 times/year).

If 4 pcs x 1.5V batteries exhausted, lock can not be open by password/card/remote.

Then use the backup battery (6LR61), connected to the electrode on the outdoor panel. Operation will be available again.



Operation process of urgent battery recharge

## 7.1. Parameters and Specification

## 1. Basic parameters

- 1.1. power: door lock uses 4 pieces AA alkaline battery, work voltage ranged in 4.0V-6.5V. Remote uses 1 piece 12V alkaline battery (same as battery used for automobile remote).
- 1.2. Door PCB and remote PCB have anti-connection function.
- 1.3. Outdoor panel size: 190mm(L) × 75mm(W) × 75mm(H)
- 1.4. Indoor panel size: 150mm(L) × 90mm(W) × 40mm(H)
- 1.5. Urgent charge: has electrode on outdoor panel, support 6-9V DC.
- 1.6. Low voltage alarm:  $4.4 \pm 0.2V$  (door lock).
- 1.7. Static current: for door lock  $\leq 20\mu A$ , for remote  $\leq 1\mu A$ .
- 1.8. Work current: for door lock  $\leq 200mA$ , for remote  $\leq 50mA$ .
- 1.9. Work temperature:  $-20^{\circ}C$  -  $55^{\circ}C$ .
- 1.10. Storage temperature:  $-30^{\circ}C$  -  $70^{\circ}C$ .
- 1.11. Work humidity: work normally under 93%RH.
- 1.12. Average work time without disturb:  $\geq 25,000h$ .
- 1.13. When power exhausted, key record still be saved.
- 1.14. Against interference from RF magnetic field: under 80MHz-1000Mhz (adjusted frequency: 1KHz, adjusted degree: 80%) interference, testing field power: 10V/m. No error operation exists during test, while work normally after test.
- 1.15. Against disturb from static discharge: can afford 15k testing discharge from mute. No error operation/ temporal invalid function exists during test, while work normally after test.
- 1.16. Drive time of motor: clockwise and anticlockwise rotating need 3s in total. Light coupler will check the motor at place or not within 3s. When located at place, stop rotating; otherwise alarm will be sent.

## 2. Requirements on function

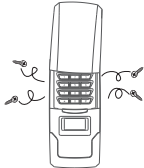
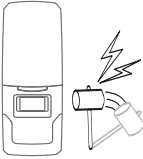
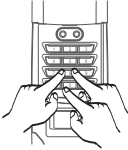
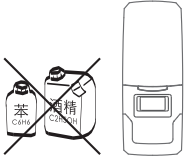
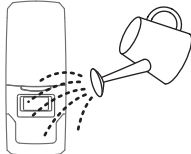

- 2.1. Unlock by RF card/password/remote/chief switch on the indoor panel.
- 2.2. Can match one main card, 97 keys (include sub-cards and remote in total); main card can set/cancel sub-cards, also can cancel remote/open the lock.

## 7.1.Parameters and Specification

- 2.3.Can set 2 groups password,1 for main password,1 for sub-password.  
Main password can set/cancel sub-password,also can open the lock.
- 2.4.The distance between lock and remote can reach above 30m even with obstacle.The remote work when match lock' s code, its illegal open rate less than 1/264;Better speed and sensitivity can be available when unlock by remote.
- 2.5.Sensitive unlock by RF card:the interval between read card and unlock less than 0.4s.
- 2.6.Backlight:4 blue lights with high brightness assembled inside the keypad panel.Once operate on keypad and/or slide the slip cover,backlight will be flash.No any operation 8s after backlight flash,press button " \* " to turn off the backlight.
- 2.7.Password anti-theft function:when set password, add several digits at random before the real password against theft.
- 2.8.Storage temperature:-30°C-70°C.
- 2.9.Press " \* " also can lock the door.
- 2.10.Sliding slip cover function:backlight flash 8s when slide the slip cover.Static current will not be affected by sliding for long time.
- 2.11. Alarm against theft:Auto alarm/mobile alarm against force open.
- 2.12.Alarm against error operation:no keypad operation with sliding the slip cover 5times/login wrong password 5times/unlock by illegal card 5times,will send alarm for 30s,then be deadlock for 1m which any operation be invalid.Cancel the alarm by legal card/remote/indoor swtich.
- 2.13.Battery inspection function:after put on battery,will be inspected by PCB privately.Indicated light and backlight will flash with chord sending,motor in calm.
- 2.14.Voice for open/close the door:open/close the door,chord will be sent out as an indication.
- 2.15.Main card/main password can be changed:before change it,cancel the old main card/old main password.
- 2.16.Deadlock function:start deadlock,any operation outdoors be invalid.When unlock by card/password/remote,deadlock will be suggested.
- 2.17.Press any key with shout chord " dy " .
- 2.18.Can cancel the sub-cards/remote by login the code.

## 8.1.Notice

**⚠ WARN**

<p>Do not disassemble and break down the lock privately for repair.</p> 	<p>Do not use hard tool(like hammer) to beat the lock.</p> 	<p>Do not press the key at random at the same time.</p> 
<p>Do not use wet cloth/alcohol/benzene as cleanser when clean the lock.</p> 	<p>Do not let liquid like water leak into the panel.</p> 	<p>Do not slide the slip cover with powerful force.</p> 

## 8.1. Notice

**1. Keep the password concealed.**

Before using, press originate button for originating to ensure all the previous record cancelled. Set the key by password/card/remote again.

**2. Set and change the password periodically.**

Set and change the password periodically against the password revealed and criminal.

**3. Keep the RF card and remote carefully.**

When RF card and remote miss, cancel the matched setting on time.

**4. Pay much attention to cleaning the product.**

Product will be in trouble when water leak into the panel.

**5. Do not repeat error operation much times.**

No keypad operation with sliding the slip cover 5times/login wrong password 5times/unlock by illegal card 5times, will send alarm for 30s, then lock be deadlock for 1m which any operation be invalid.

**6. Do not disassemble the product.**

When in trouble, do not repair it privately as its complicated structure and PCB, otherwise will make the item worse. Without specialist for repair, contact our after-service centre.

27

## 9. Mobile alarm system (for user's option).

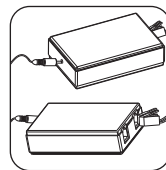
Before setting, make sure:

- A. Lock matched with main card.
- B. Adapter record is originated: open the adapter lid, press "set" button 1 time on the PCB.

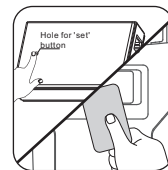
Setting process for lock with mobile function.

1. Connect the adapter to socket by charger.
2. Connect the adapter to cell phone: plug the telephone line into adapter port to finish it. One adapter only connect 1 phone.
3. Connect the signal between the adapter and lock. Originate the adapter record first. After inducting by ungranted card more than 5 times, lock will send alarm voice. Once receiving the alarm signal, the adapter will send succeed chord.
4. Use phone/mobile to call the cell phone connected to the adapter.
5. After getting through, dial target mobile number for alarm, add "\*" on the former phone.
6. After illegal operation on the lock (inducting by ungranted card more than 5 times), if alarm voice sent out from the target mobile, setting is finished.

Notice: adapter only read signal from main card. Lock with changed main card, will not have mobile alarm system, which should be set again.

**Setting process**

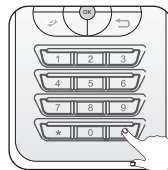
1. connect the adapter to socket and cell phone.



2. originate adapter record first, make illegal operation on lock (by induct illegal card 5 times). When adapter receive alarm from lock, which will send chord, connecting succeed.



3. use phone/mobile to call the cell phone connected to the adapter.



4. After getting through by sending chord, dial target mobile number for alarm, add "\*" on the former phone.

28