

Fingerprint Door Lock

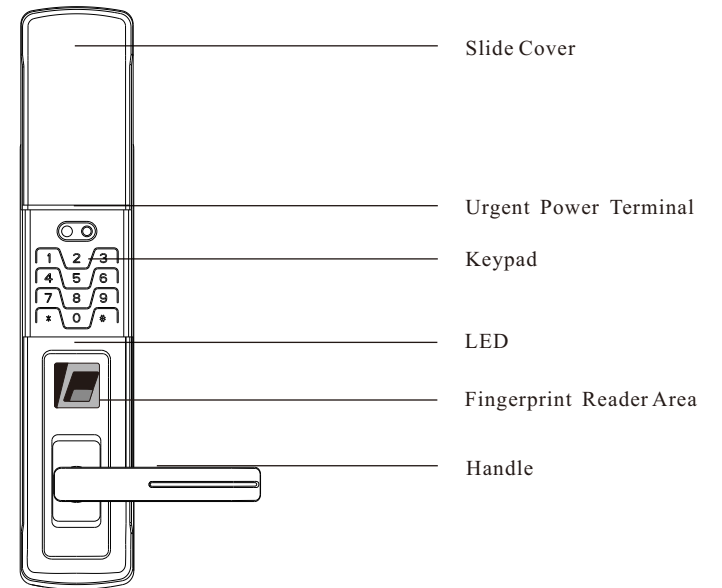
User Manual

Smart Lock Specialist for Family, Hotel, Office, Villa and Plaza

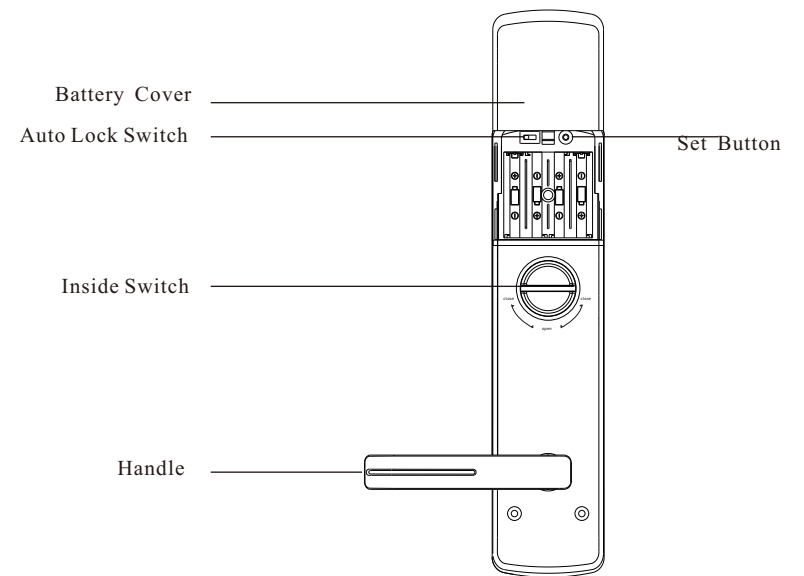


Be sure to read this manual carefully before using or operating our product

Lock Body Sketch

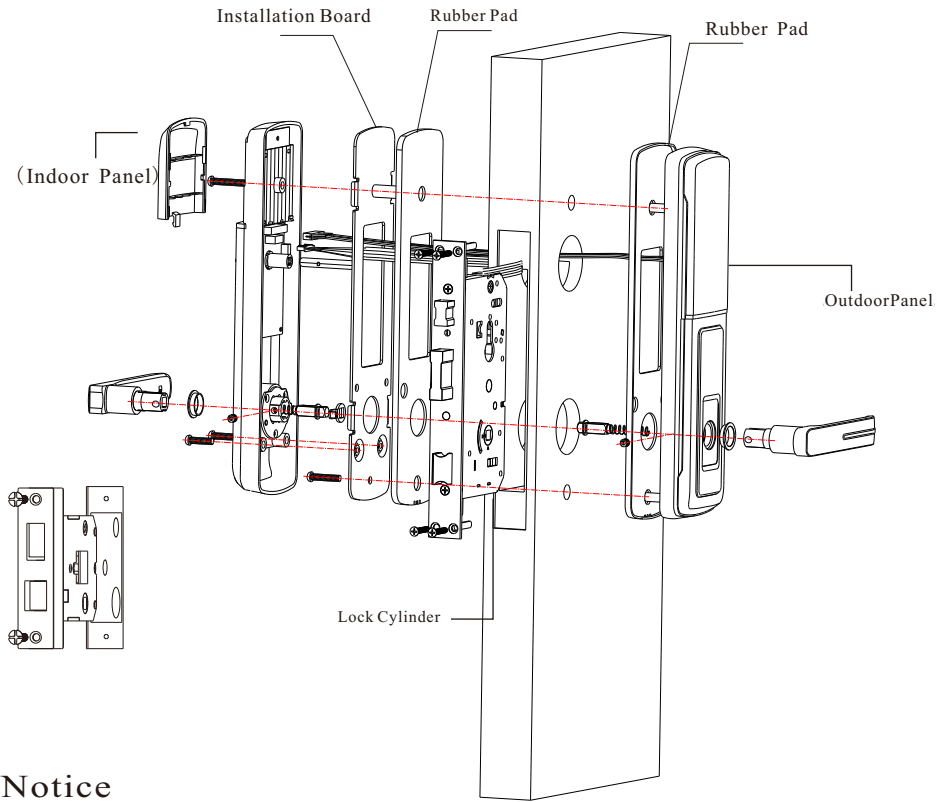


Outside Panel




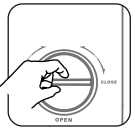
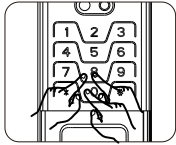
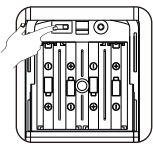


Inside Panel

Installation Sketch



Notice

⚠ WARN

<p>Press " # " for Mute; Press again for voice</p> 	<p>Deadlock inside when switch is on " close " and no use to unlock outside</p> 	<p>Please change password periodically</p> 
<p>Preset is in Manual Mode; Turn the auto lock to left for Auto Mode</p> 	<p>Keep dry</p> 	<p>Do not disassemble or remode the unit; Do not pull/push slide cover forcefully</p> 

Packing List

Item Name	Quantity
Screw Kits	40---60(MM)
	60---80(MM)
	80---100(MM)
Lock Cylinder	
Battery Cover	
Patch Cord	
Remote(selective)	
Voice Module(selective)	
Message Module (selective)	
Installation Board	
Connecting Strut	
Rubber Pad	
Inside & Outside Handle	
Latch Box (Magnet Included)	
GSM Module (selective)	
Other	

Unlocking Setting

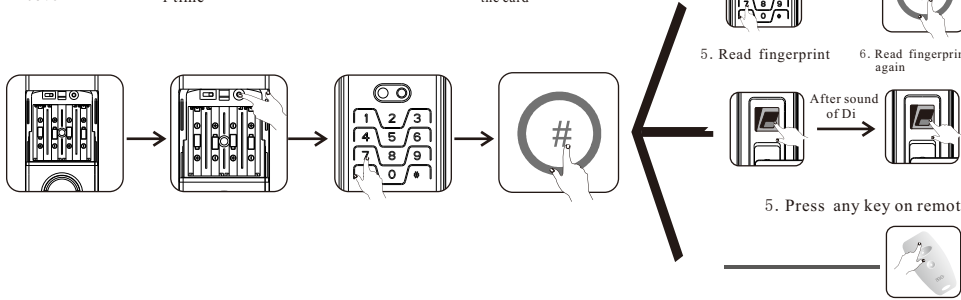
Set Master Password (first password after purchase is regarded as master password)

1. Open battery cover
2. Press set button 1 time
3. Set master password (3-8 digits)
4. Press " # ", chord sound, and master password is OK



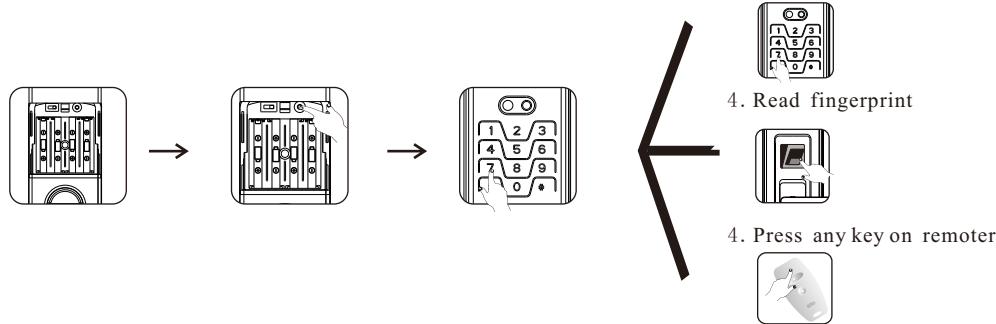
Set Password, Fingerprint and Remote (Total 70, including password, fingerprint and remote Remote is selective)

1. Open battery cover
2. Press set button 1 time
3. Enter master password + " # "
4. Set card number (01-97) + " # " Card number is what you name the card
5. Set password (3-8 digits)
6. Press " # "
5. Read fingerprint
6. Read fingerprint again
5. Press any key on remote



Delete Password, Fingerprint or Remoter

1. Open battery cover
2. Press set button 2 times
3. Enter master password + " # "
4. Enter the number of fingerprint, password or remote that you want to delete + " # "
4. Read fingerprint
4. Press any key on remoter

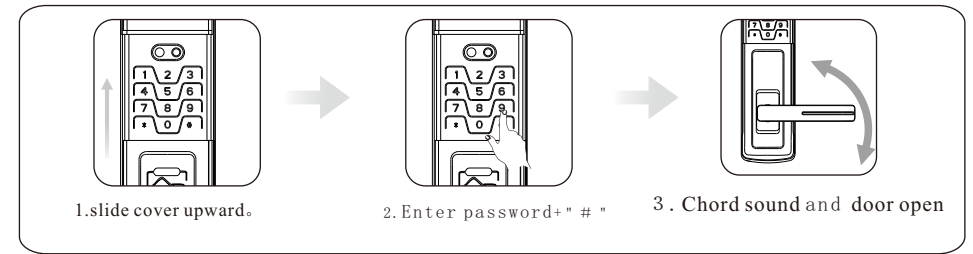


Delete All Passwords, Fingerprints and Remoters

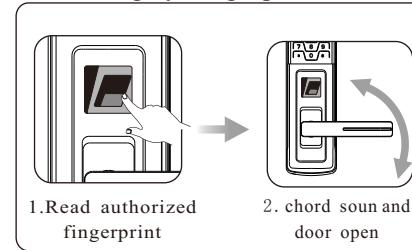
1. Open Battery Cover
2. Press set button 3 times
3. Enter master password
4. Press " # ", chord sound and deleting OK



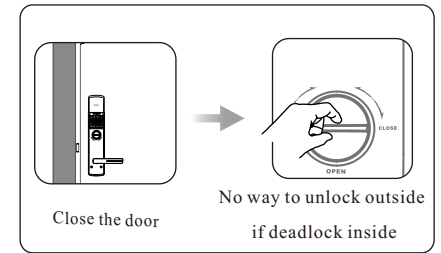
Unlocking by Password (Extra digits can be added before or after password for high security)



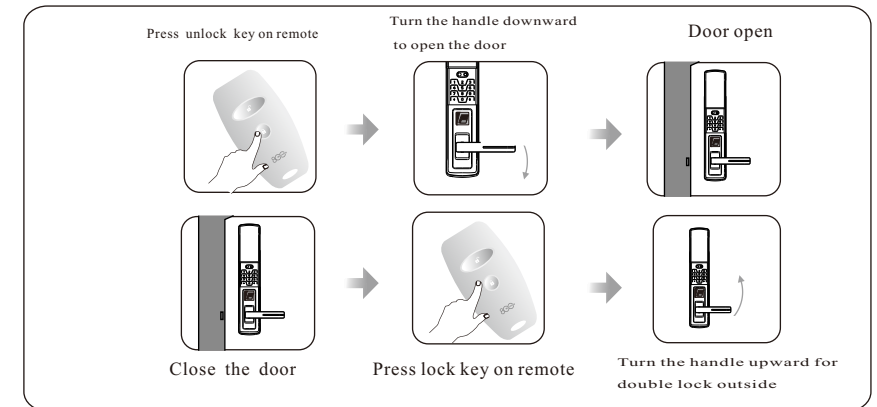
Unlocking by Fingerprint



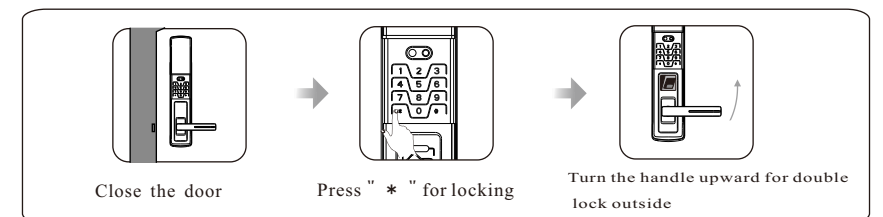
Deadlock Inside



Unlocking by Remote



Outdoor Locking (Manual Mode)



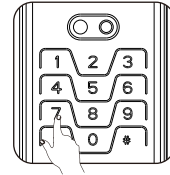
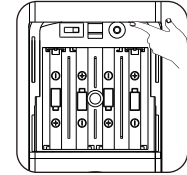
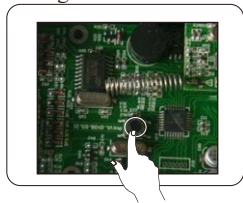
Unique Function(Distance between lock and signal box should be within 30M)

Wiring



Connect Lock and Signal Box(1 signal box can be connected with 10 locks at most)

1. Press set button on signal box 1 time
2. Press set button on lock 4 times
3. Enter Master Password+ "*" # ", chord sound,connecting OK

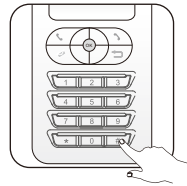


Programming

1. Use mobile to ring the phone connected with the signal box
2. Set password+"#"on the mobile (Password to be 3-8 digits)
3. Use mobile to ring the phone again



Getting Through



Getting Through

Enter the lock(connected with signal box) number on your mobile. Your mobile will receive Alarm SMS when the door is violently or illegally unlocked

Press set button on signal box 1 time to save the programming

Program Mobile Alarm Function

At most 3 mobiles can be programmed

- 1 mobile: Mobile No. + "*" * * *
 - 2 mobile: Mobile No. + "*" * + Mobile NO. + "*" * *
 - 3 mobile: Mobile No. + "*" * + Mobile NO. + "*" * + Mobile NO. + "*" * *
- Sound of Di...Di will be heard every time you press "*" *



Unlocking by Mobile

1. Use a mobile or other phone to ring the phone connected with the signal box
2. To ring the same phone again
3. Enter password on your mobile or phone+"#" or "*" *. "*" # for unlocking, "*" * for locking



Hang up the call

Wait 3-5s

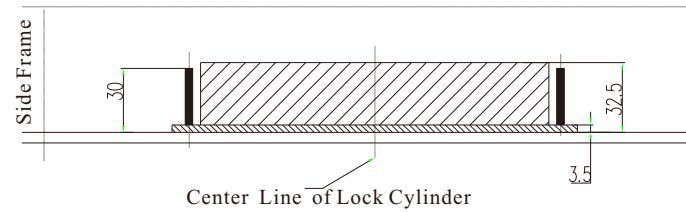
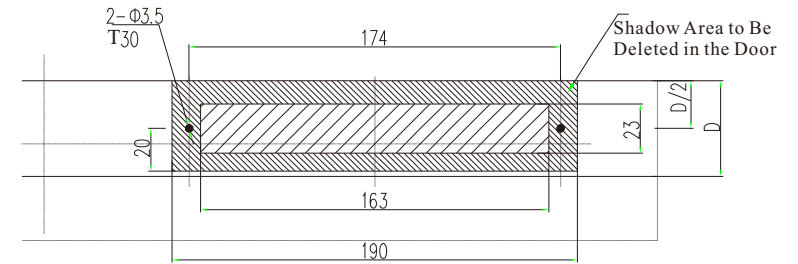


Getting Through

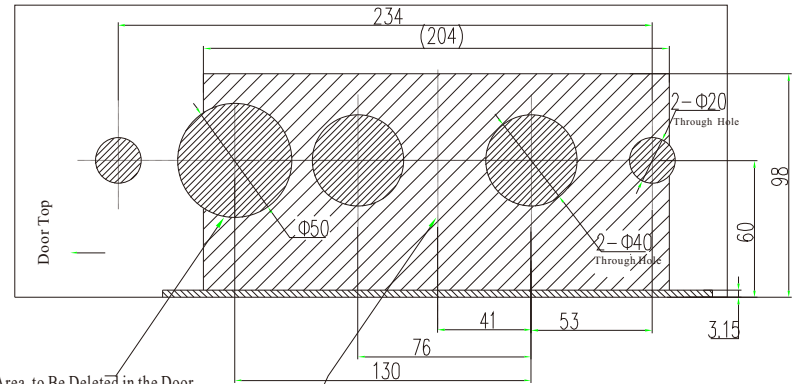
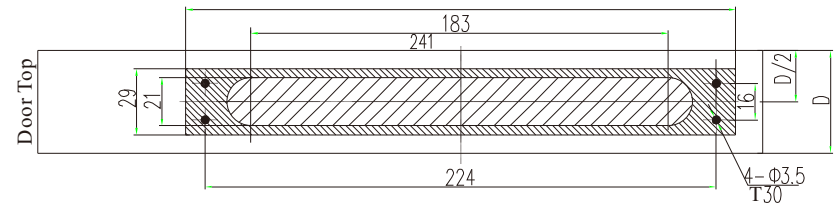


It's the mobile phone that has NOT been connected with the signal box

Door Tooling Sketch



Door Frame Tooling Sketch



Center Line of Lock Cylinder
(Door Tickness:40-55MM)

Door Tooling Sketch