

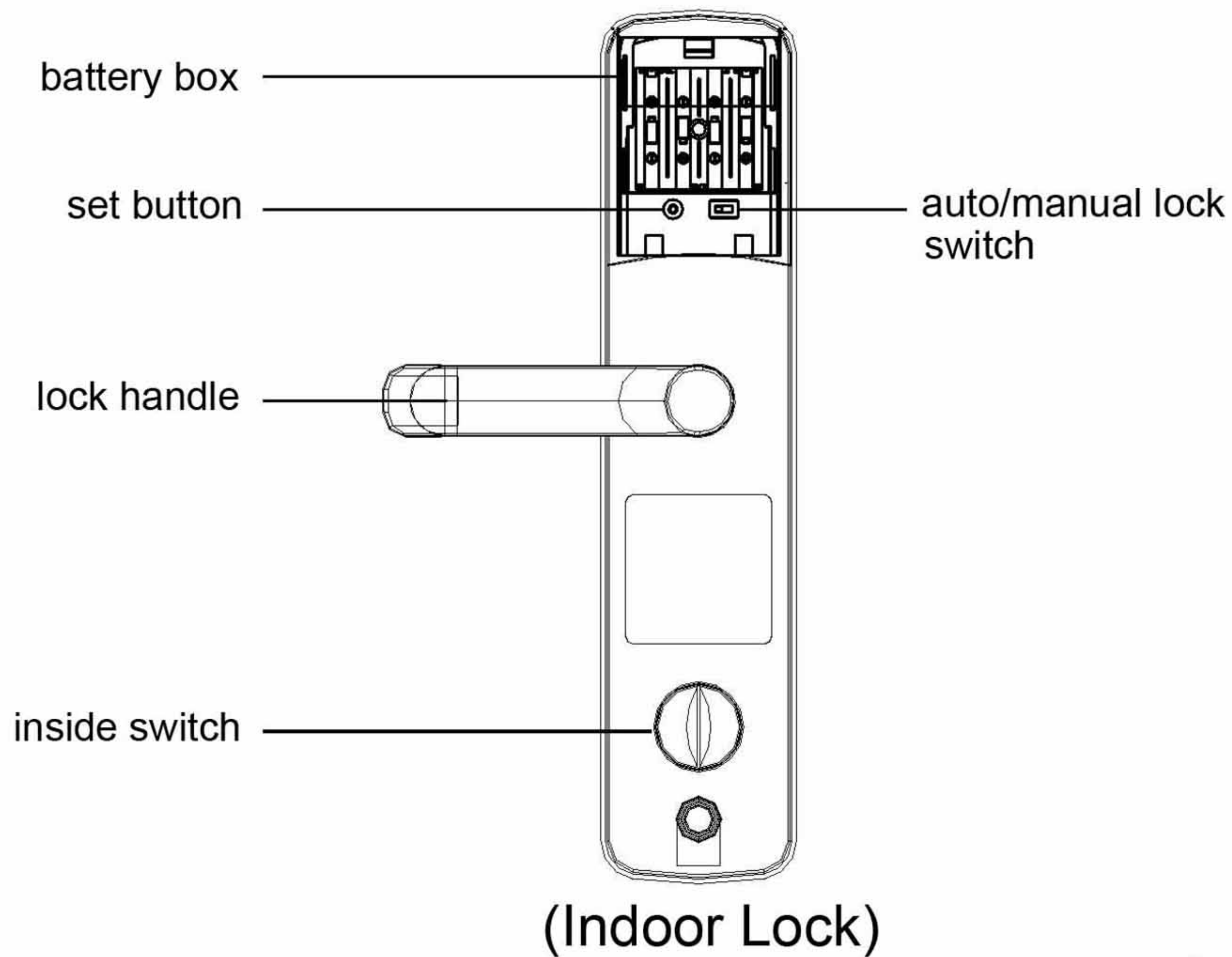
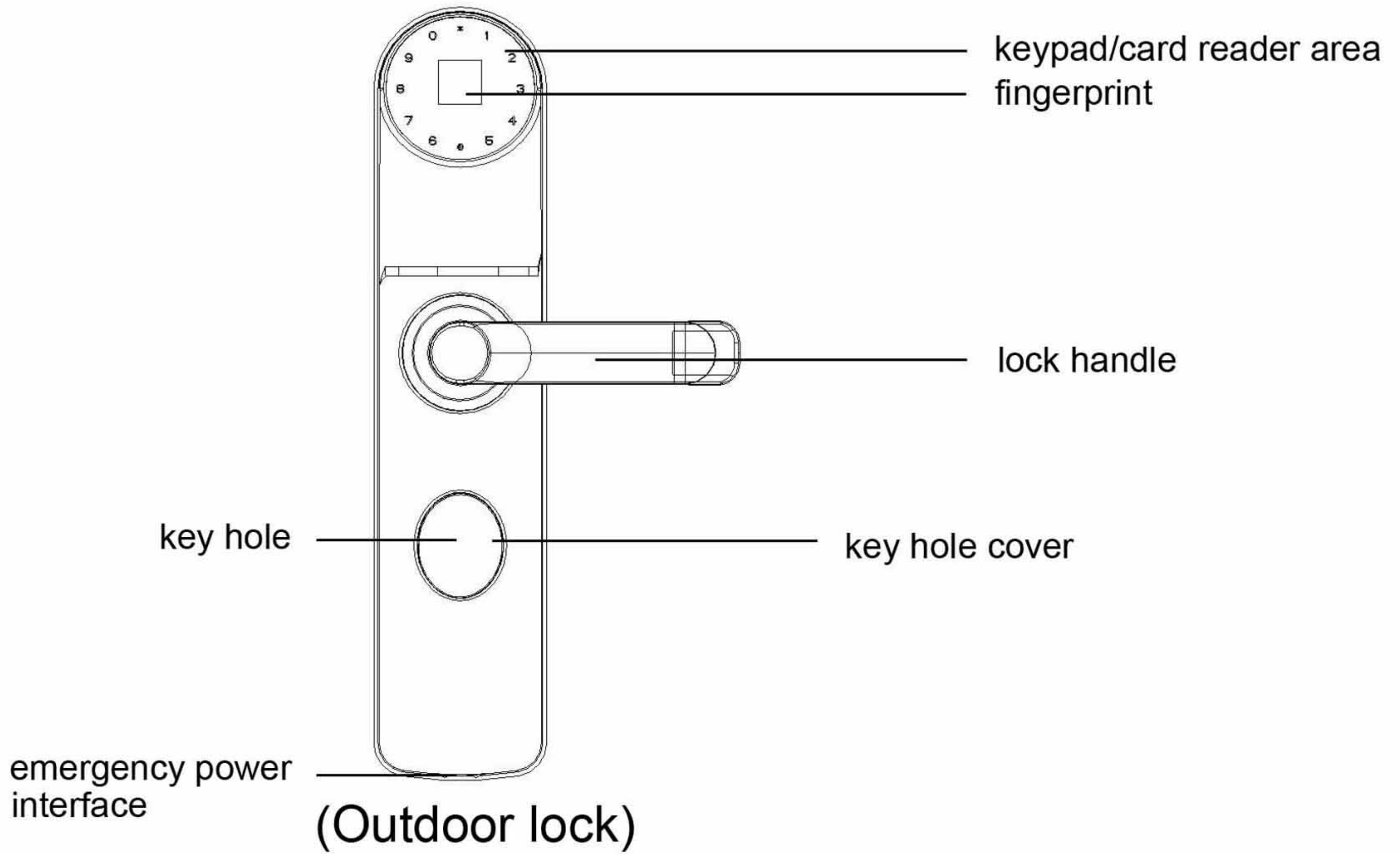
Touch Screen Fingerprint Door Lock User Manual



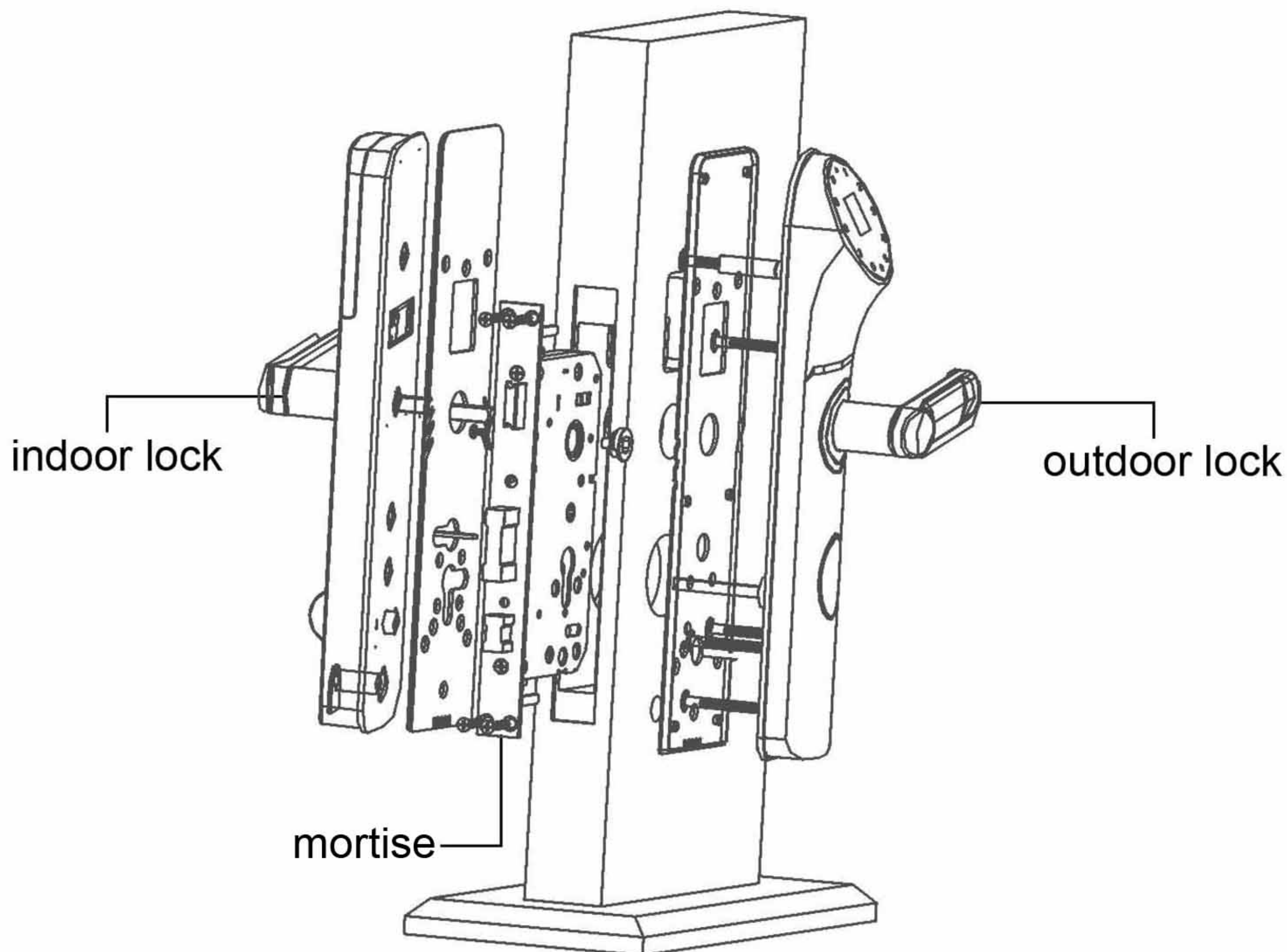
Thank you for your purchase. Please read this user's manual carefully before use.

The actual product color may be different from that seen on this manual.

Lockbody Sketch

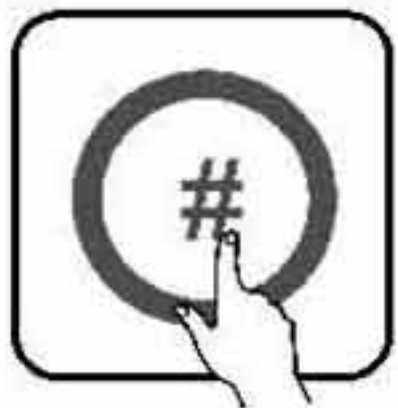
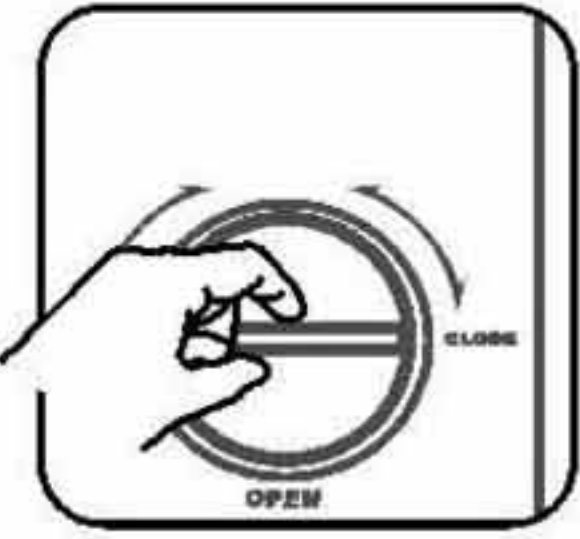
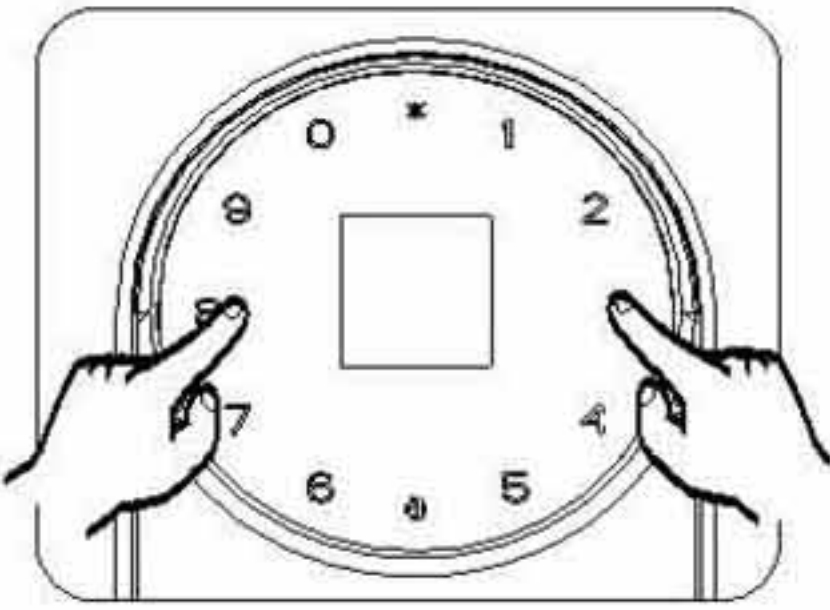
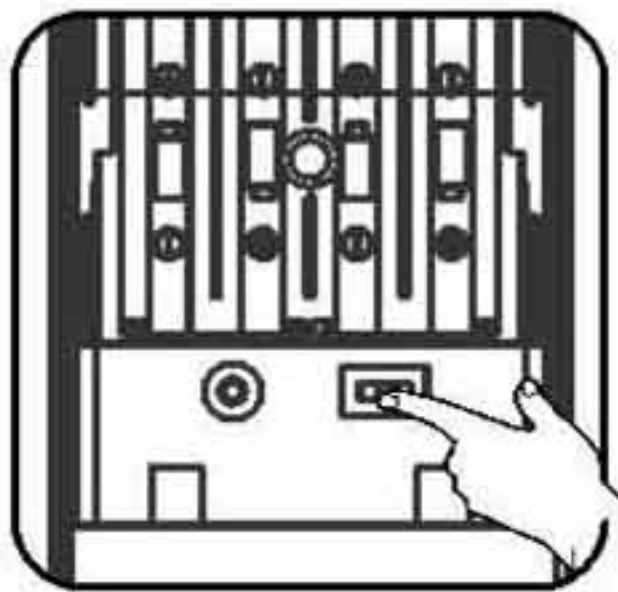
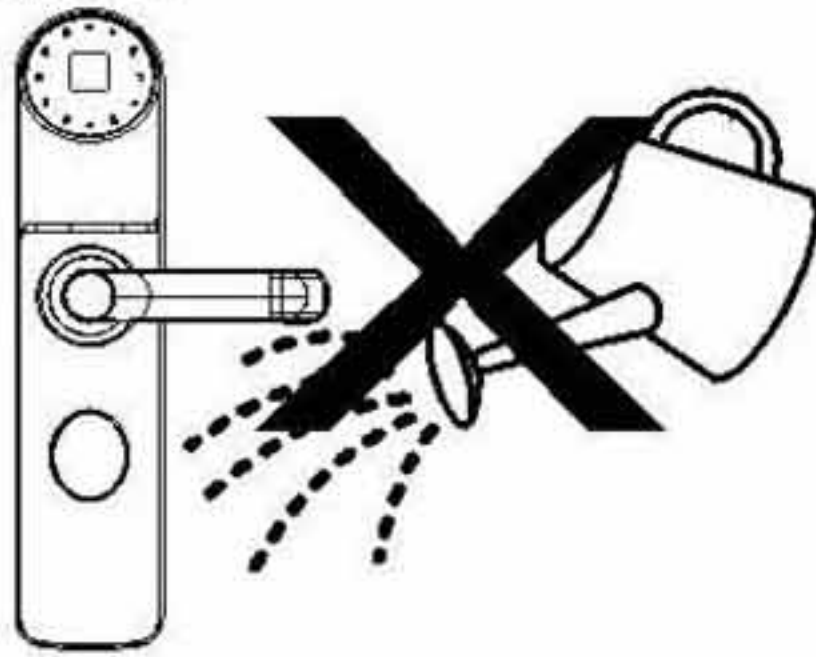
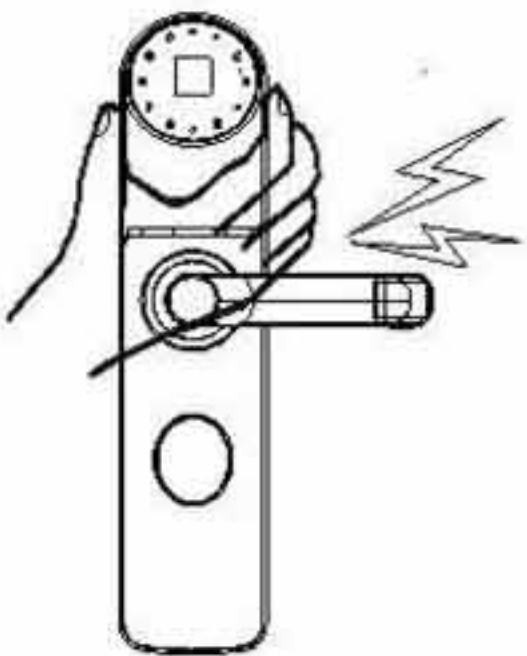


Installation Sketch



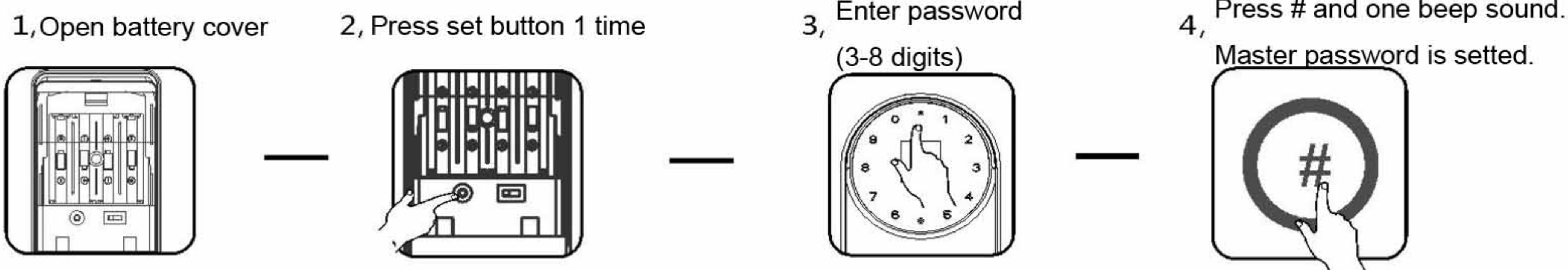
Caution

WARN

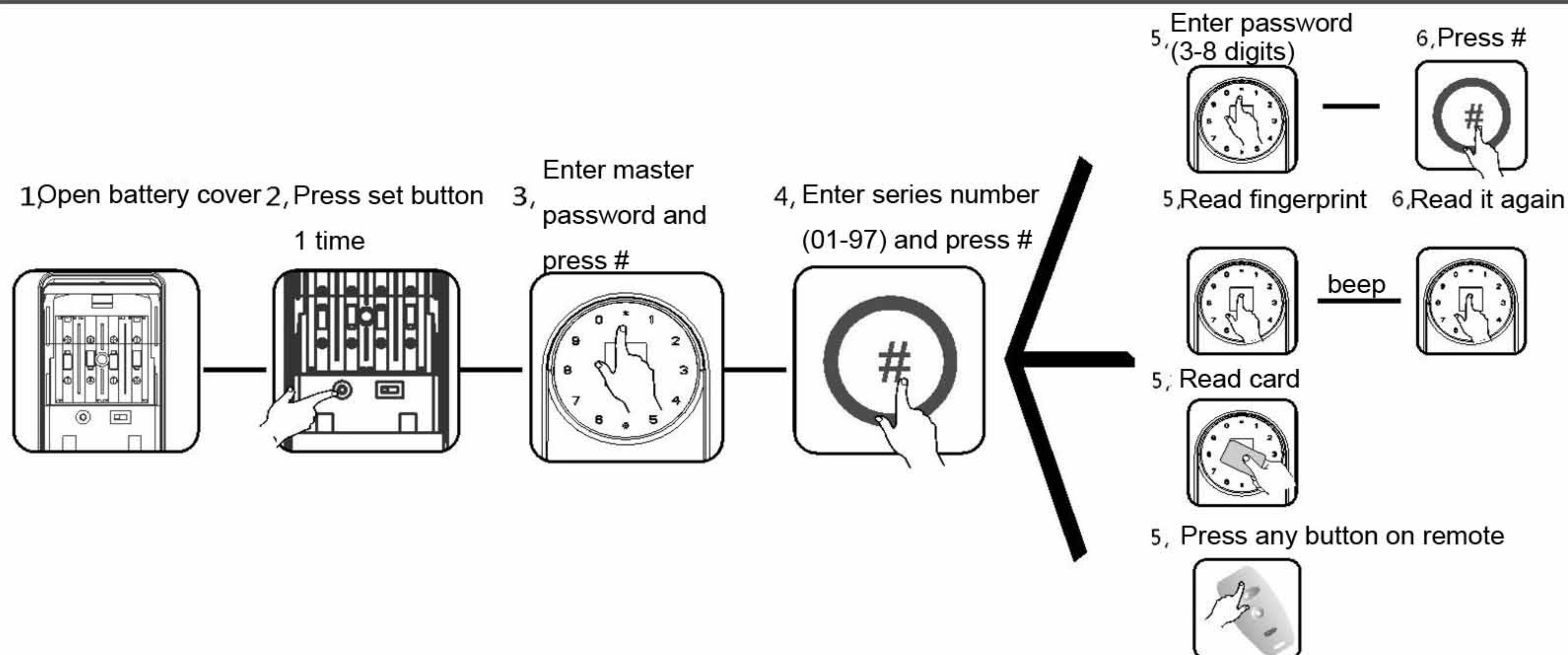
<p>Press # for mute mode and press # again for sound</p> 	<p>Deadbolt inside: when it is double locked inside, no use to unlock outside.</p> 	<p>Please change password periodically.</p> 
<p>Initial setting is manual lock. Turn the button to the other side for auto lock.</p> 	<p>Don't get water or other liquids soaked to the interior of the product.</p> 	<p>Don't disassemble or bump into the product.</p> 

Setting Instructions

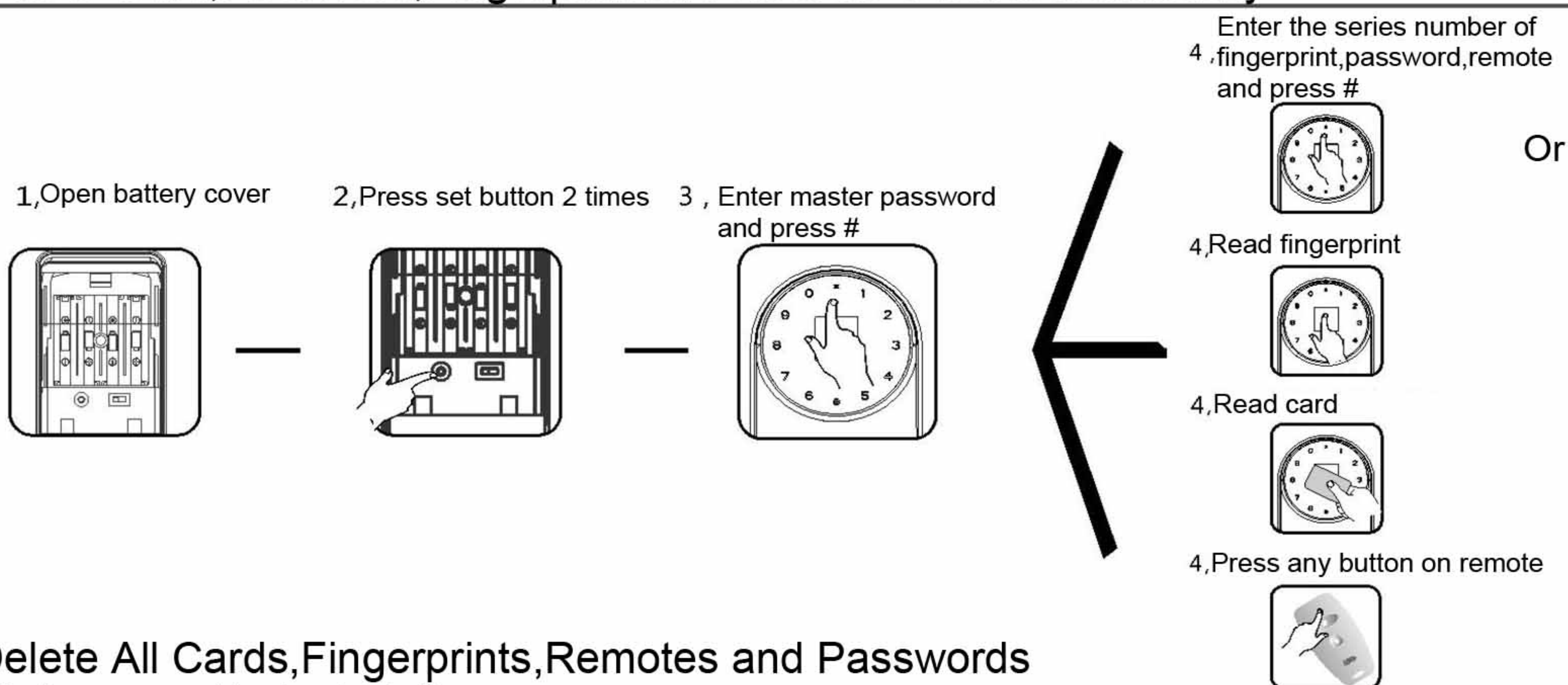
Set Master Password(The first password setted is master password)



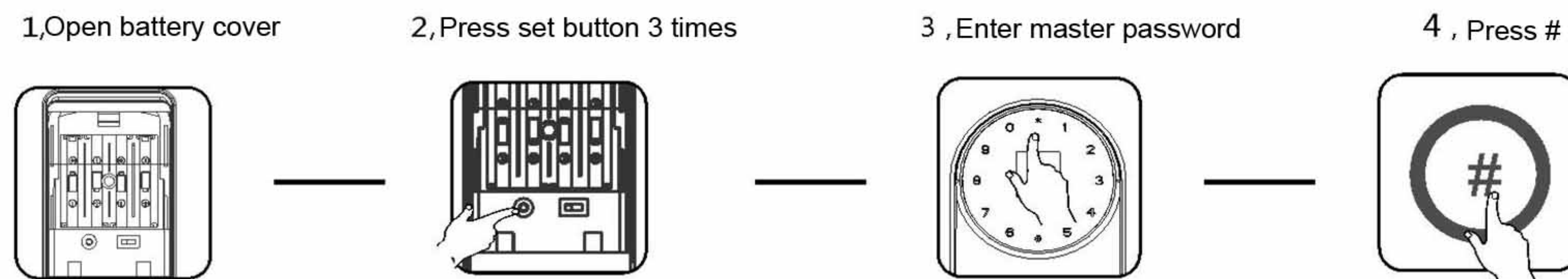
Set Card, User Password, Fingerprint and Remote Control(The capacity is 70. These are registered through master password. Remote is optional).



Delete Card, Password, Fingerprint and Remote Control individually

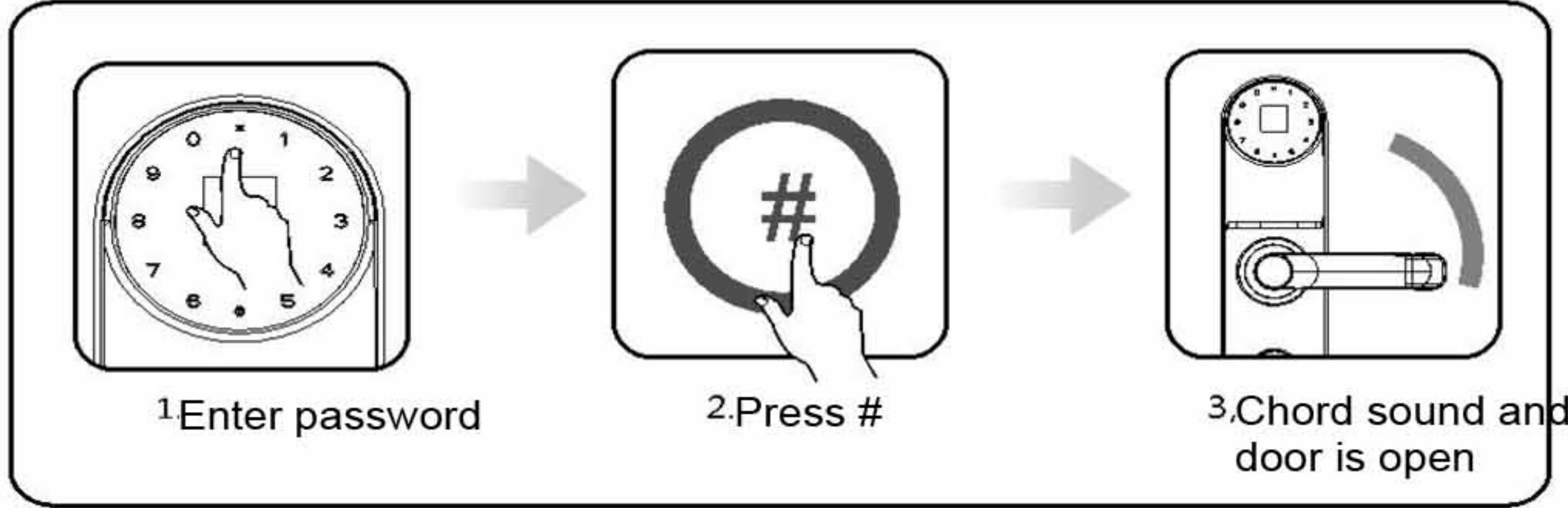


Delete All Cards, Fingerprints, Remotes and Passwords (Master password is also deleted).

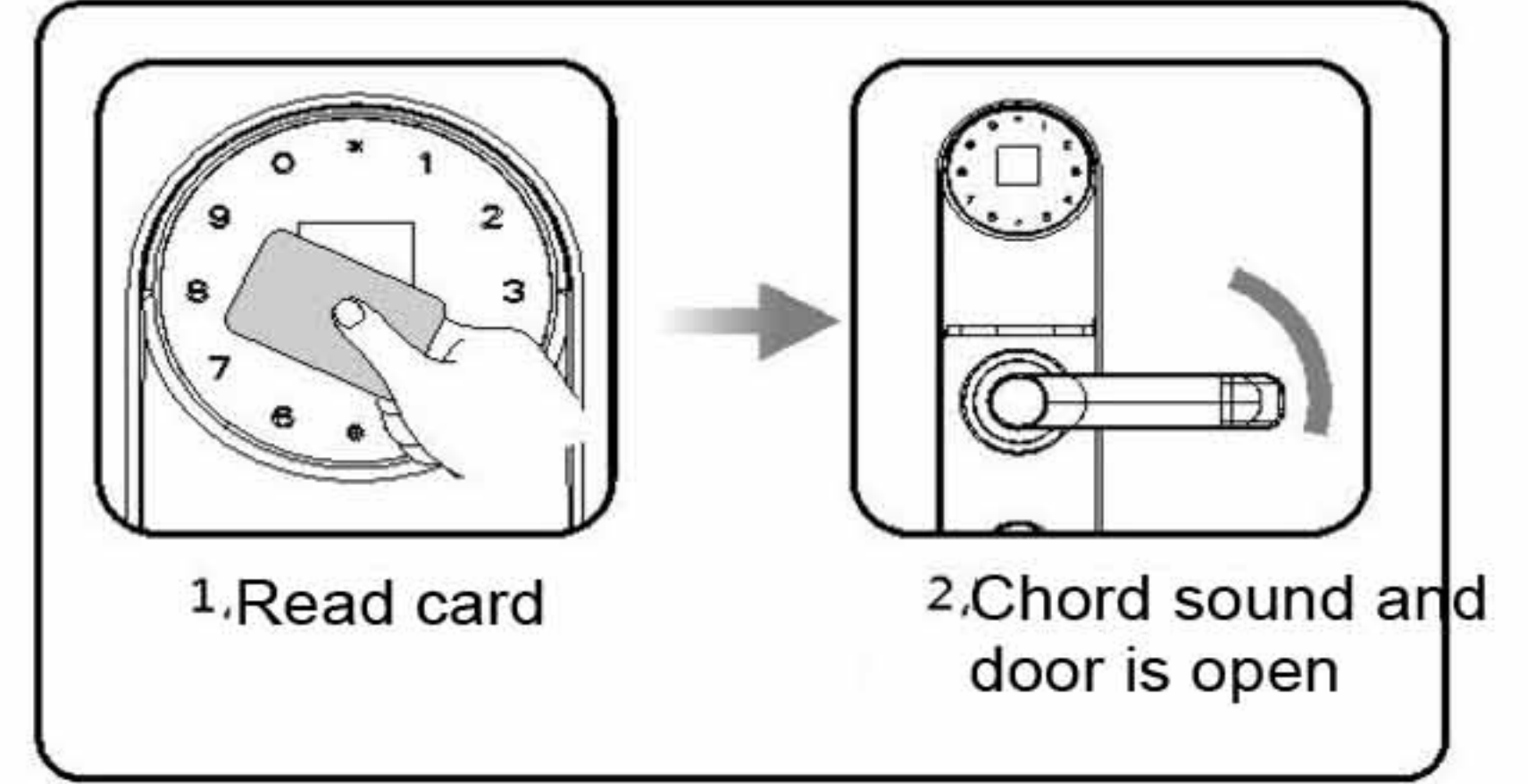


Open by Password

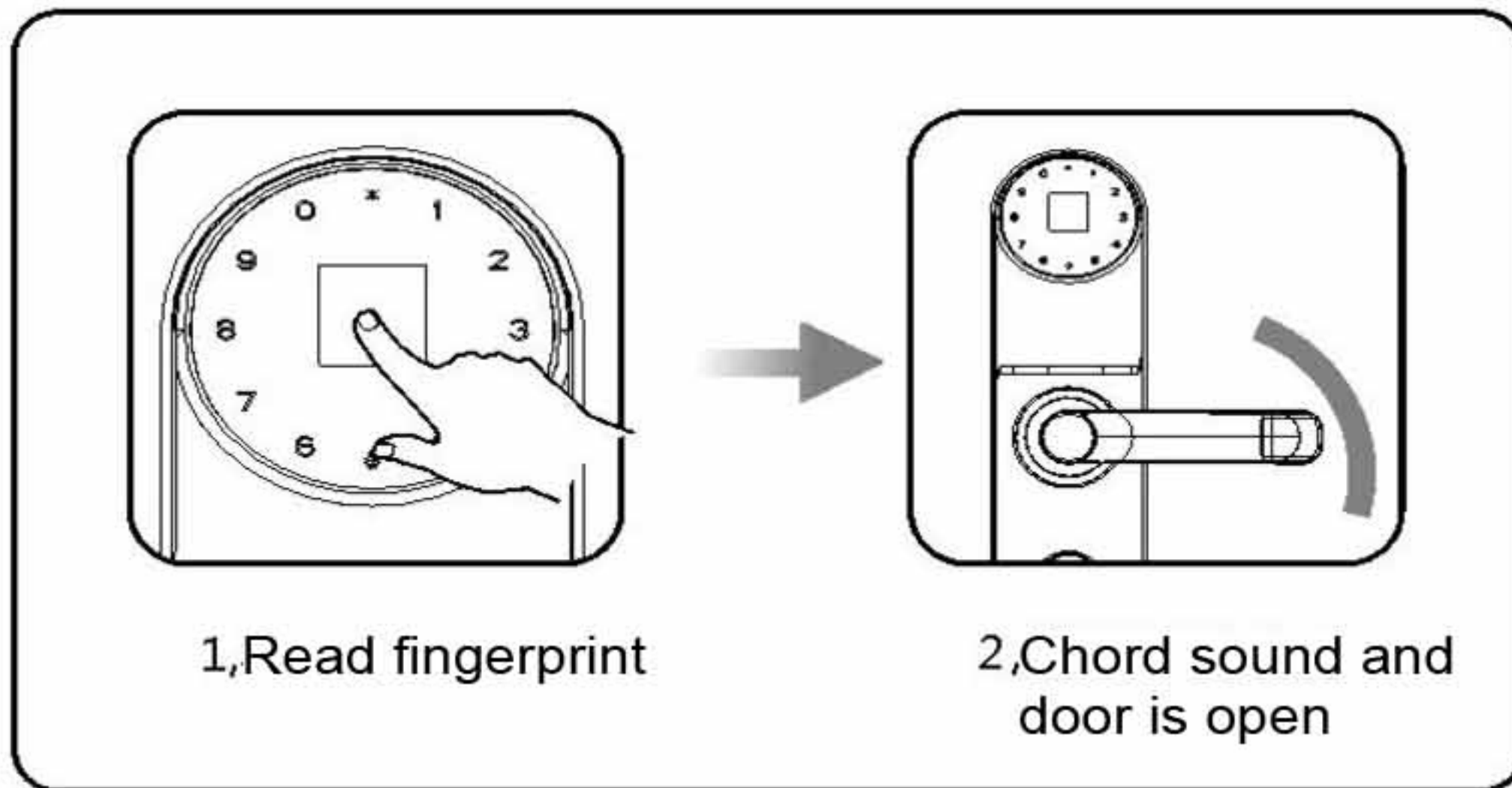
(Extra digits can be added before correct password for high security)



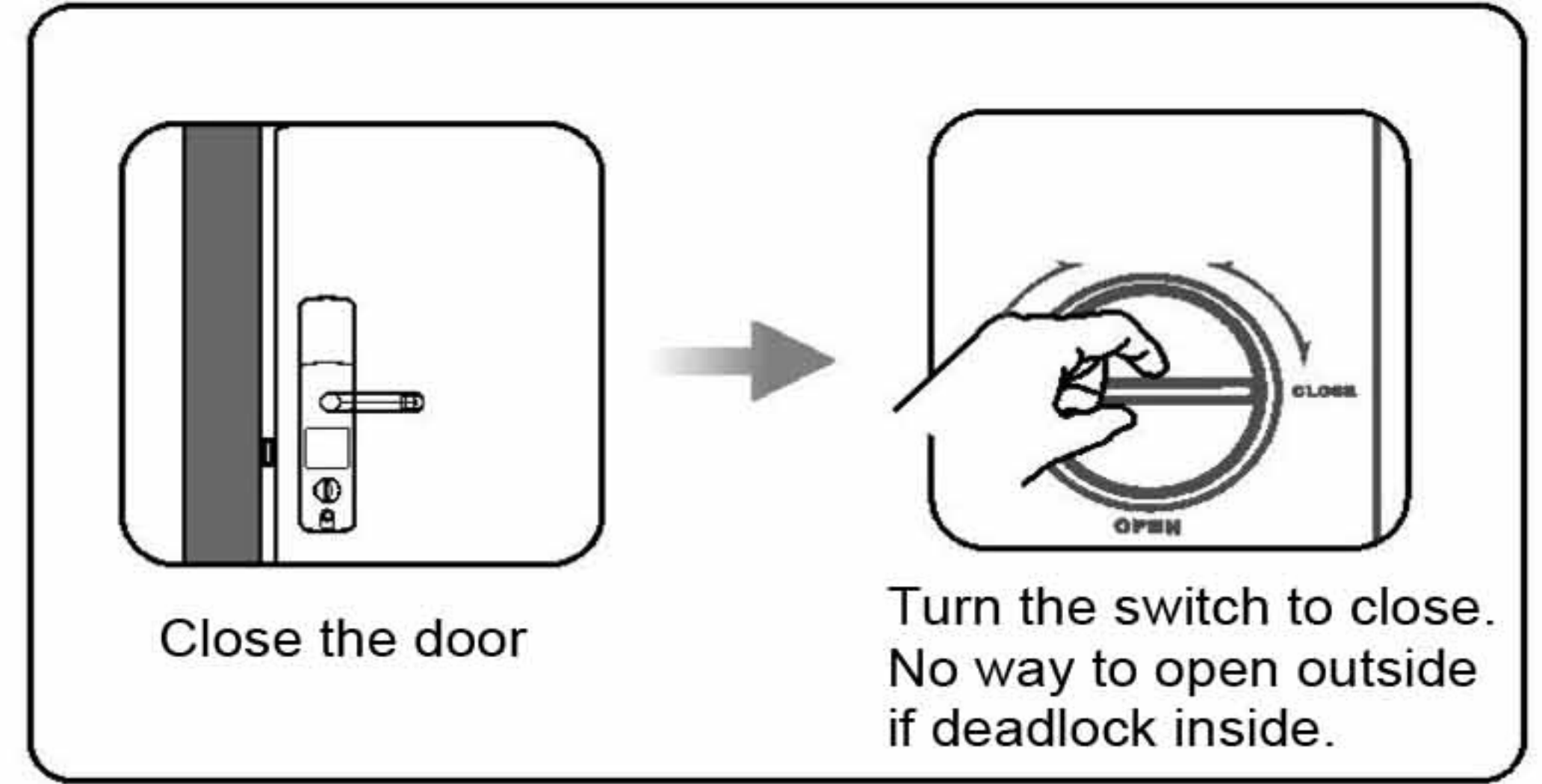
Open by Card



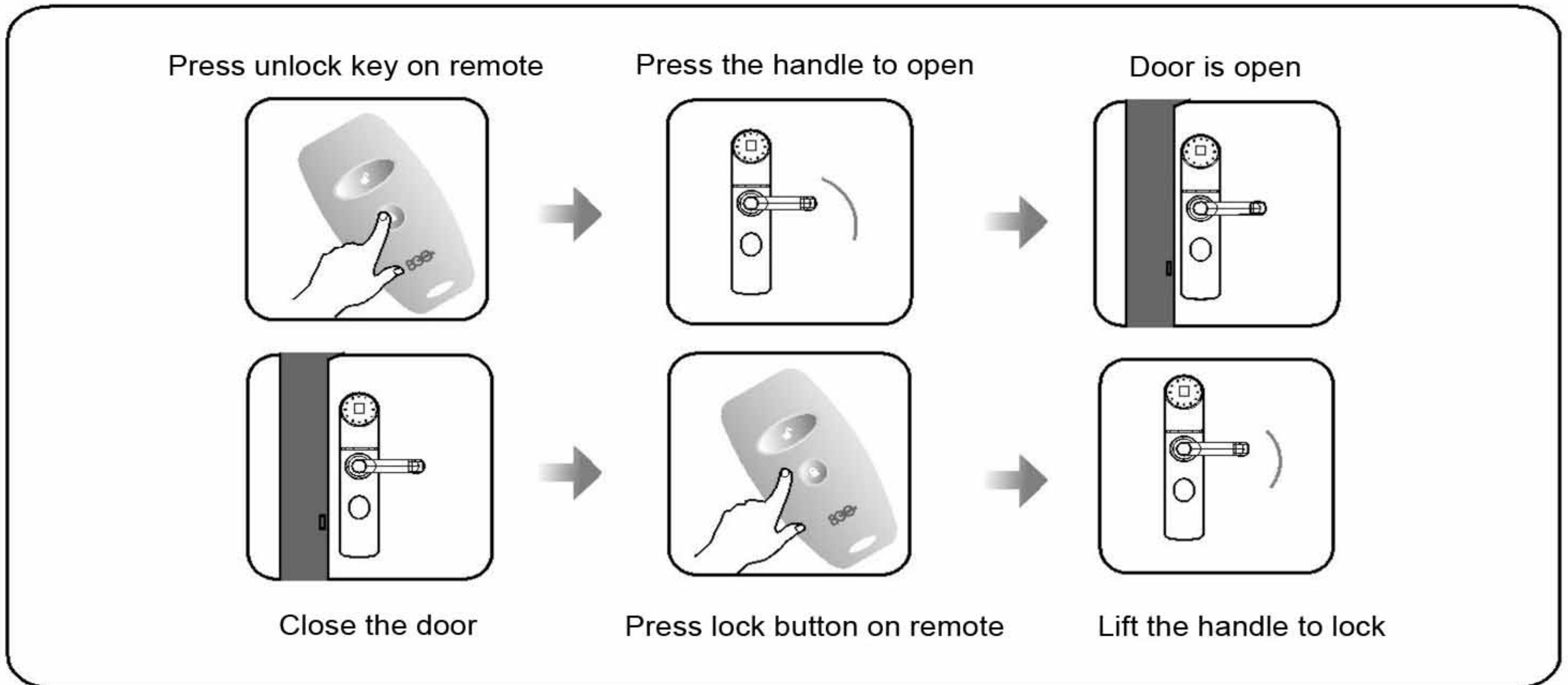
Open by Fingerprint



Deadlock Inside



Open/Lock by Remote



Lock from Outdoors

