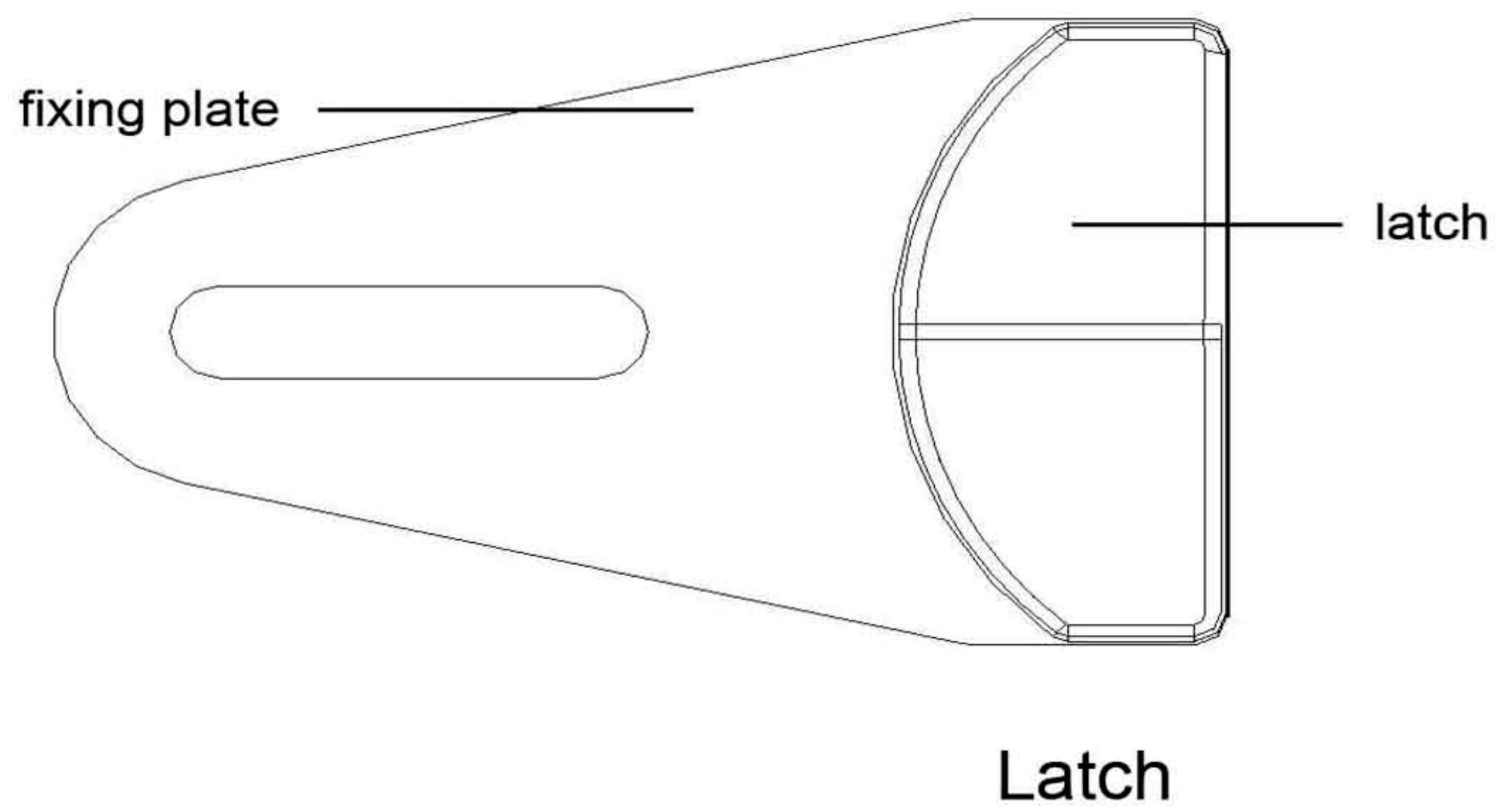
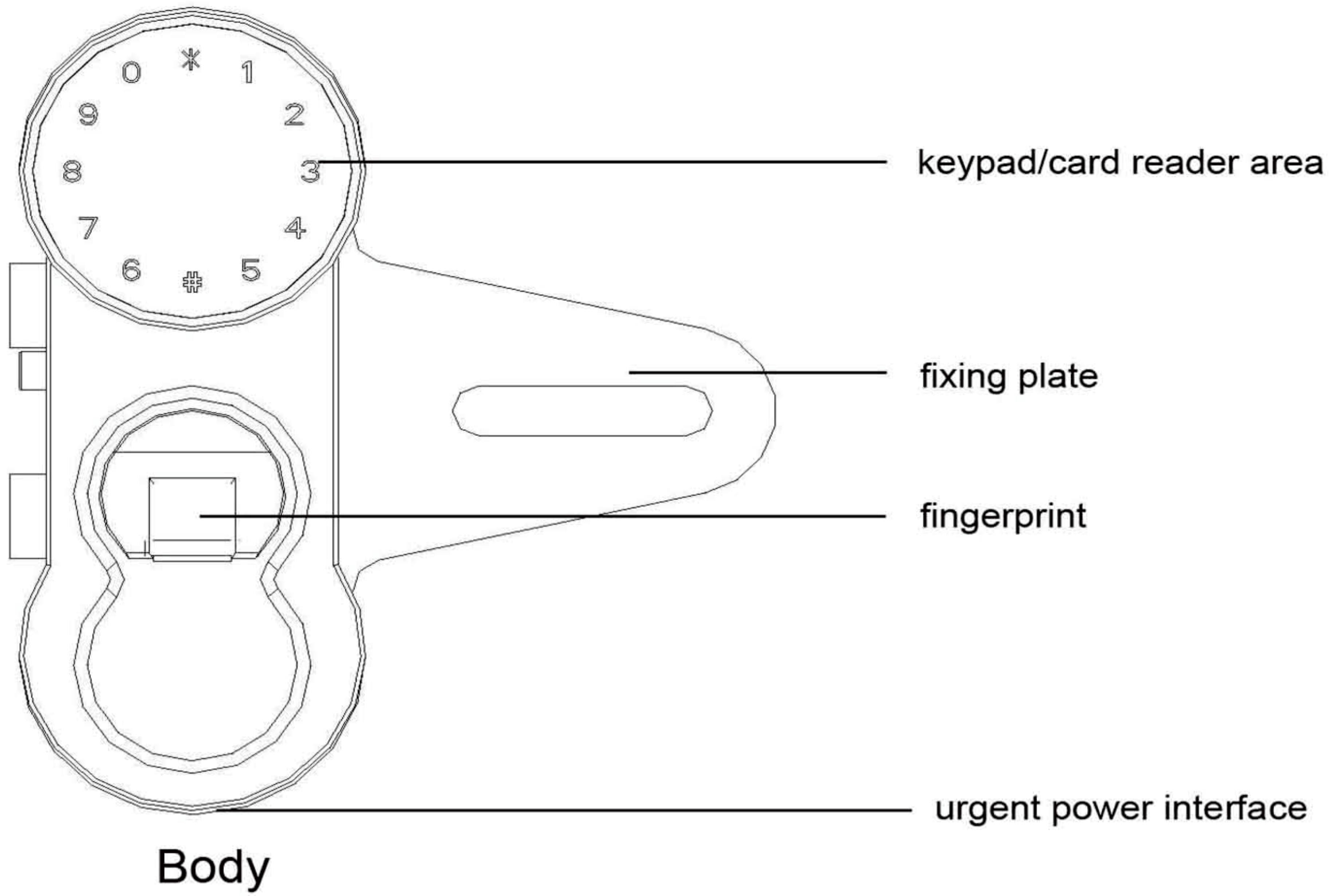


# Fingerprint Glass Door Lock User Manual

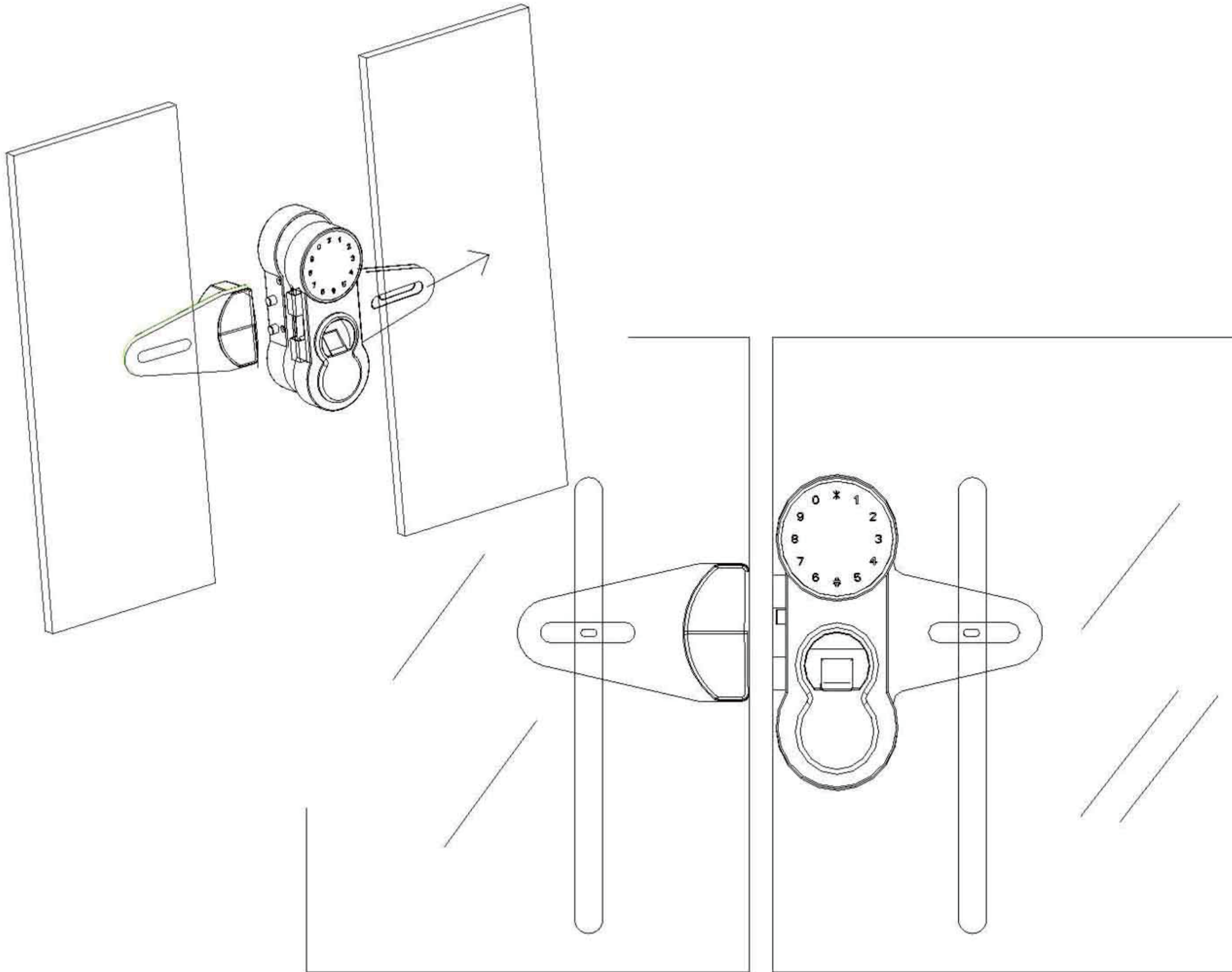


Thank you for your purchase. Please read this user's manual carefully before use.

# Lockbody Sketch

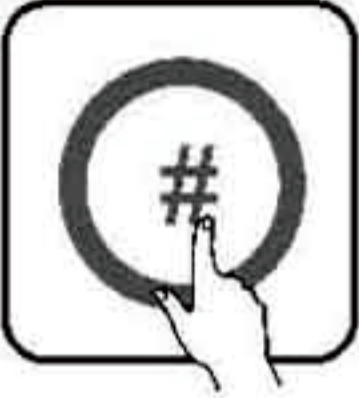
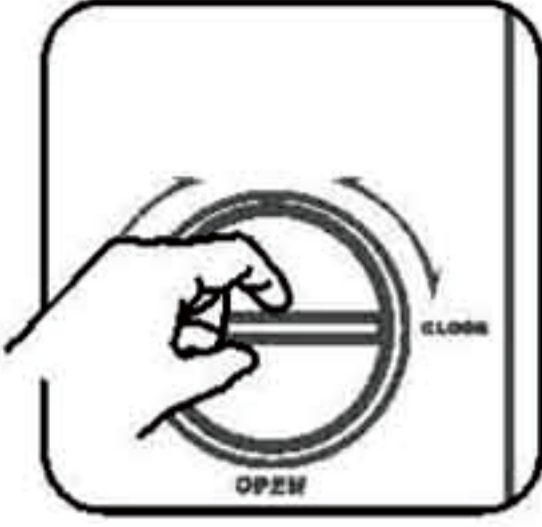
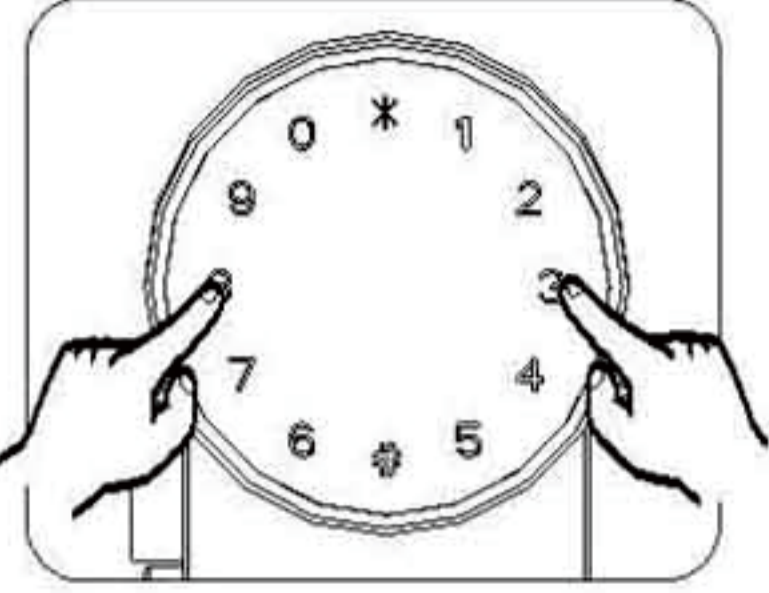

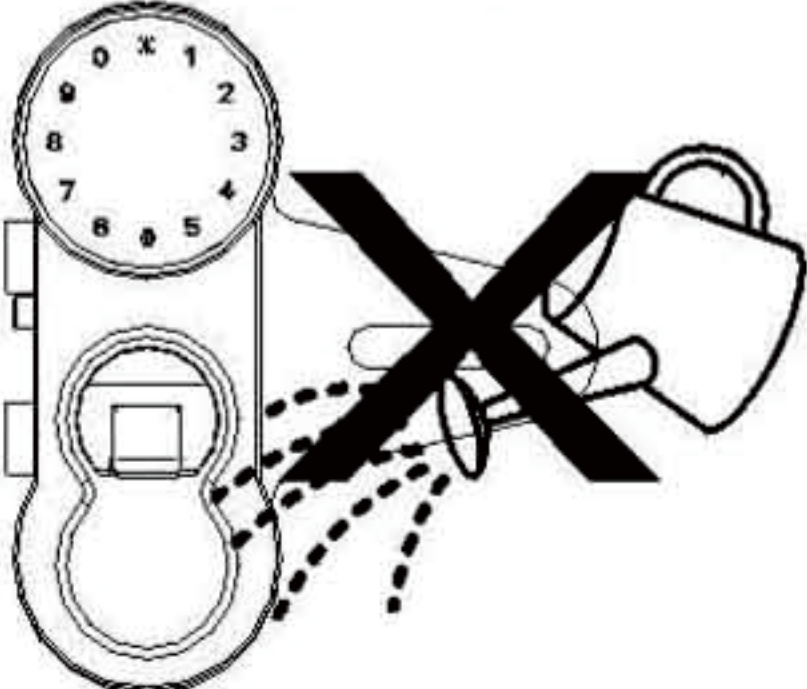
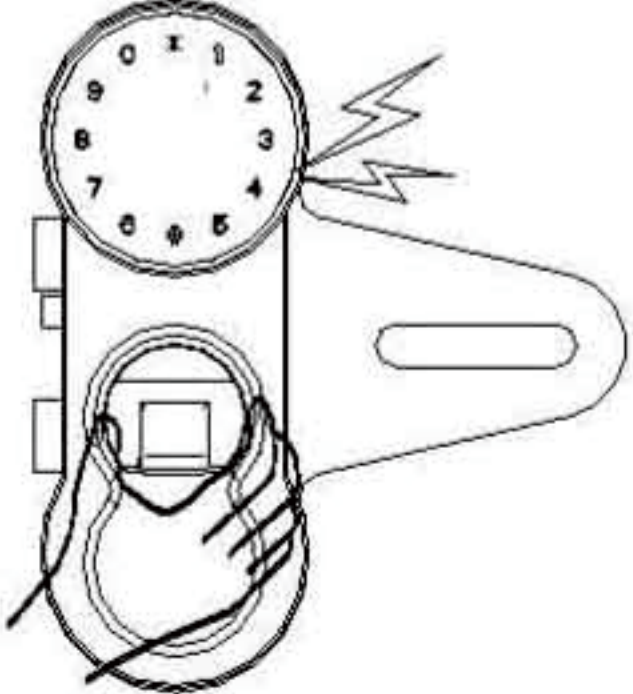


# Installation Sketch



## Caution

**⚠ WARN**

<p>Press # for mute mode and press # again for sound</p> 	<p>Lock/Open inside: Turn the switch</p> 	<p>Change password periodically.</p> 
<p>Initial setting is manual lock. Turn the button the other side for auto lock.</p> 	<p>Don't get water or other liquids soaked to the interior of the product.</p> 	<p>Don't disassemble or bump into the product.</p> 

# Setting Instructions

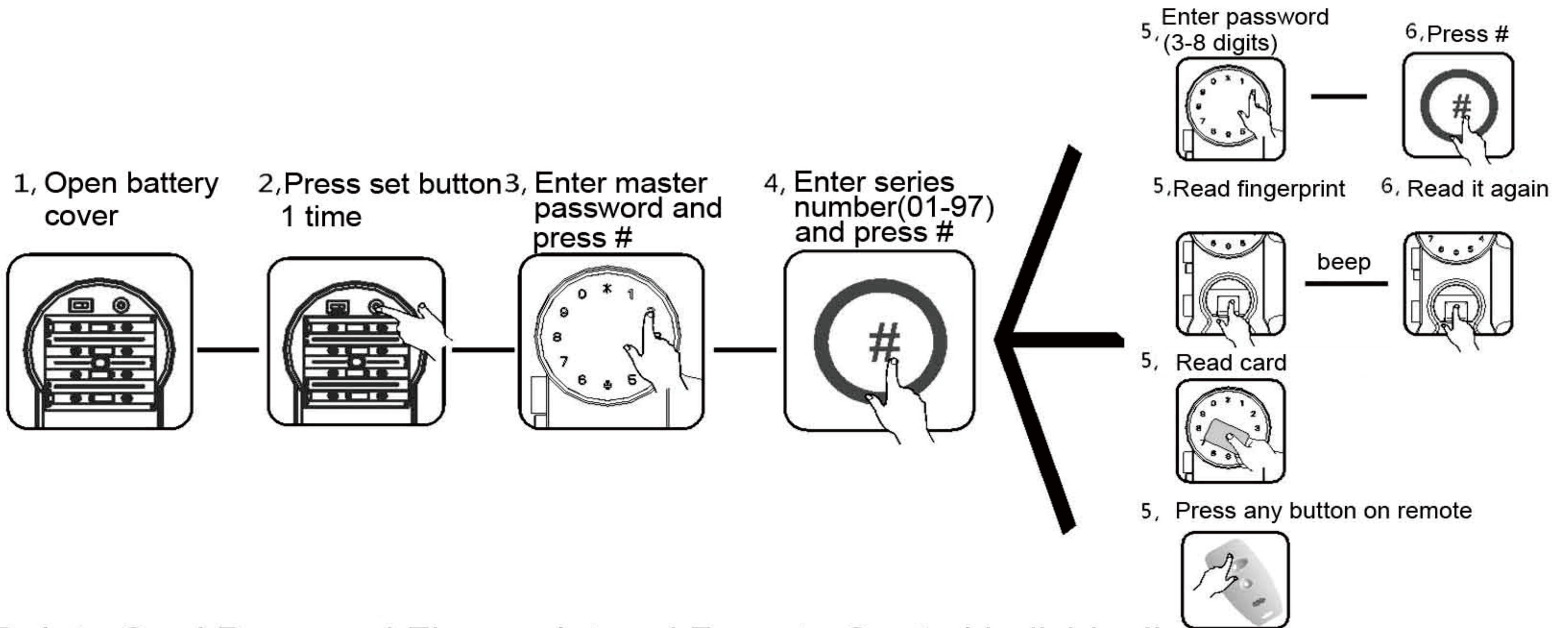
## Set Master Password (The first password setted is master password.)

- 1, Open battery cover
- 2, Press set button 1 time
- 3, Enter password (3-8 digits)
- 4, Press # and one beep sound. Master password is setted.



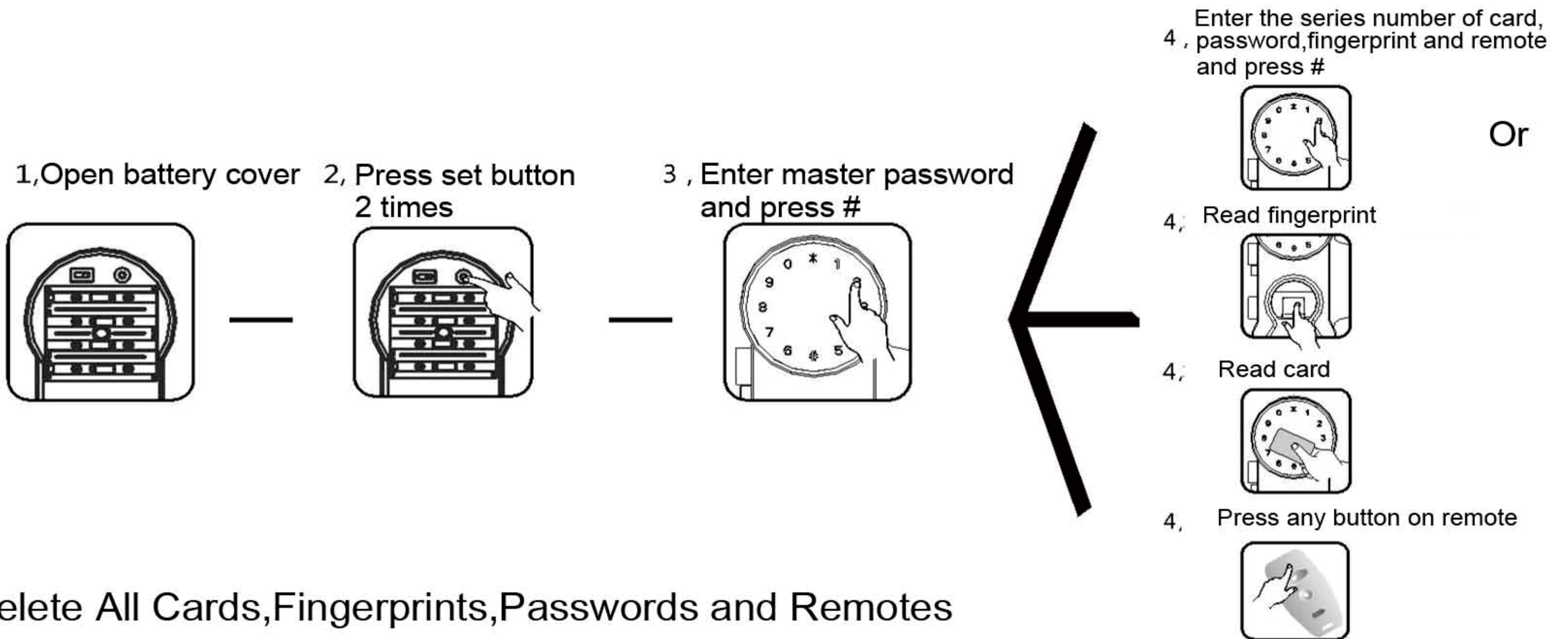
## Set Card, User Password, Fingerprint and Remote Control (The capacity is 70. These are registered through master password. Remote is optional)

- 1, Open battery cover
- 2, Press set button 1 time
- 3, Enter master password and press #
- 4, Enter series number (01-97) and press #
- 5, Read fingerprint
- 6, Read it again
- 5, Read card
- 5, Press any button on remote
- 5, Enter password (3-8 digits)
- 6, Press #



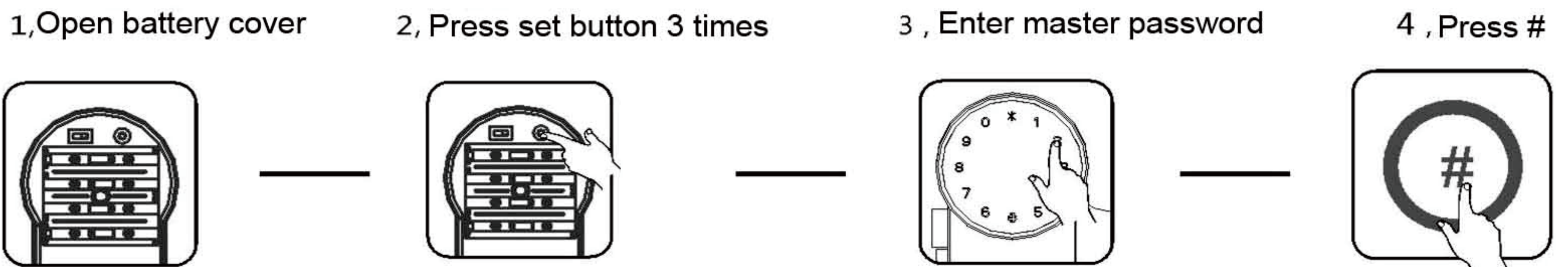
## Delete Card, Password, Fingerprint and Remote Control individually

- 1, Open battery cover
  - 2, Press set button 2 times
  - 3, Enter master password and press #
  - 4, Read fingerprint
  - 4, Read card
  - 4, Press any button on remote
  - 4, Enter the series number of card, password, fingerprint and remote and press #
- Or



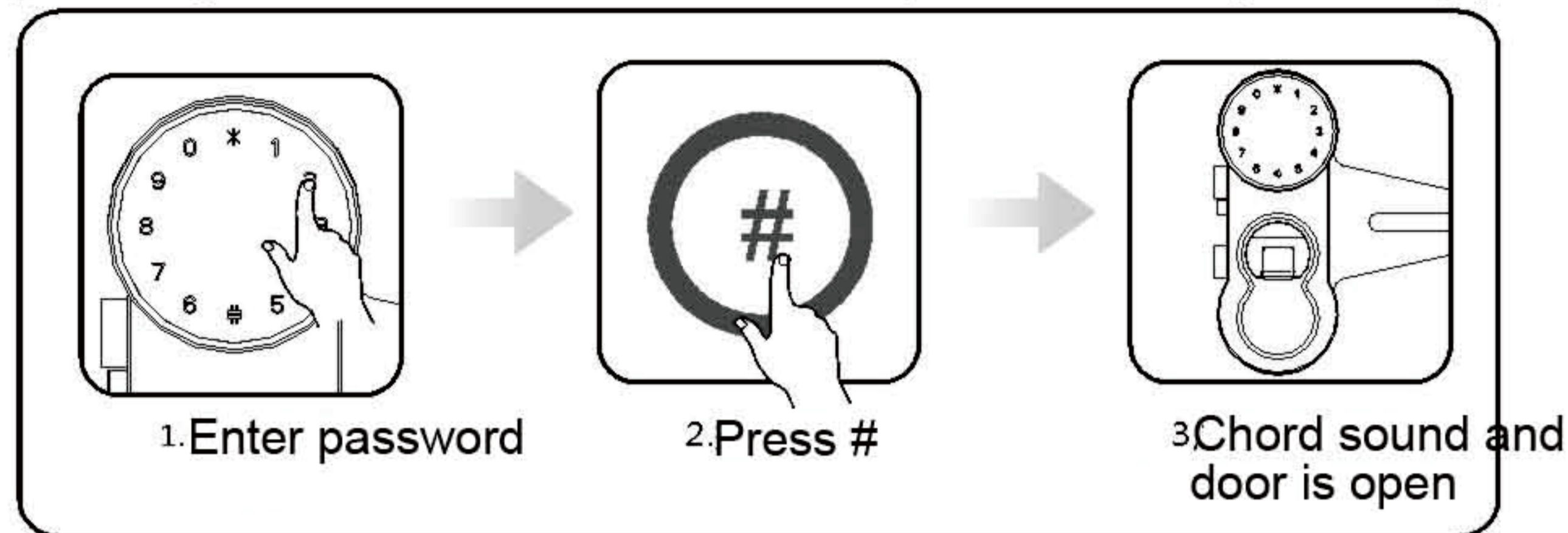
## Delete All Cards, Fingerprints, Passwords and Remotes (Master password is also deleted)

- 1, Open battery cover
- 2, Press set button 3 times
- 3, Enter master password
- 4, Press #

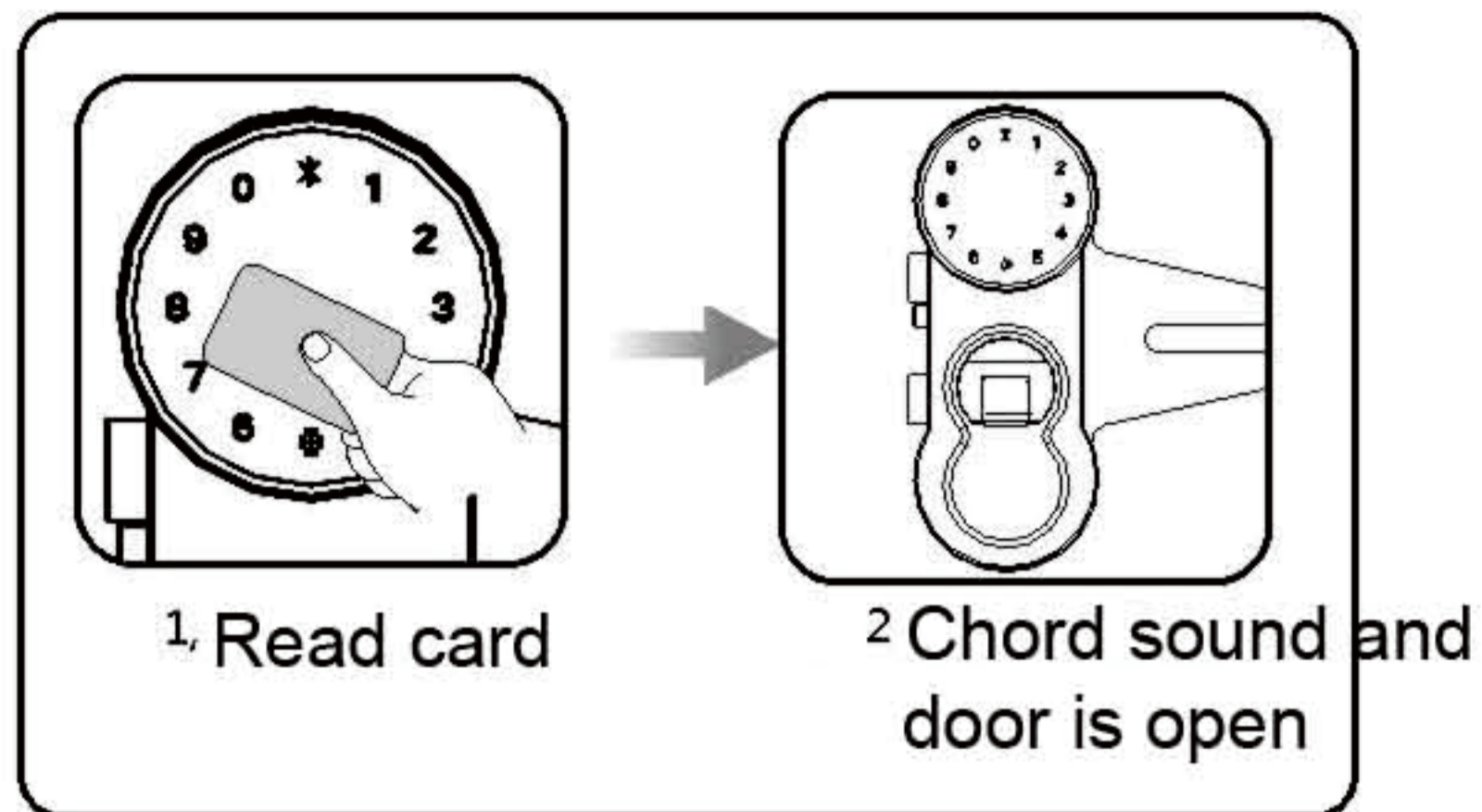


## Open by Password

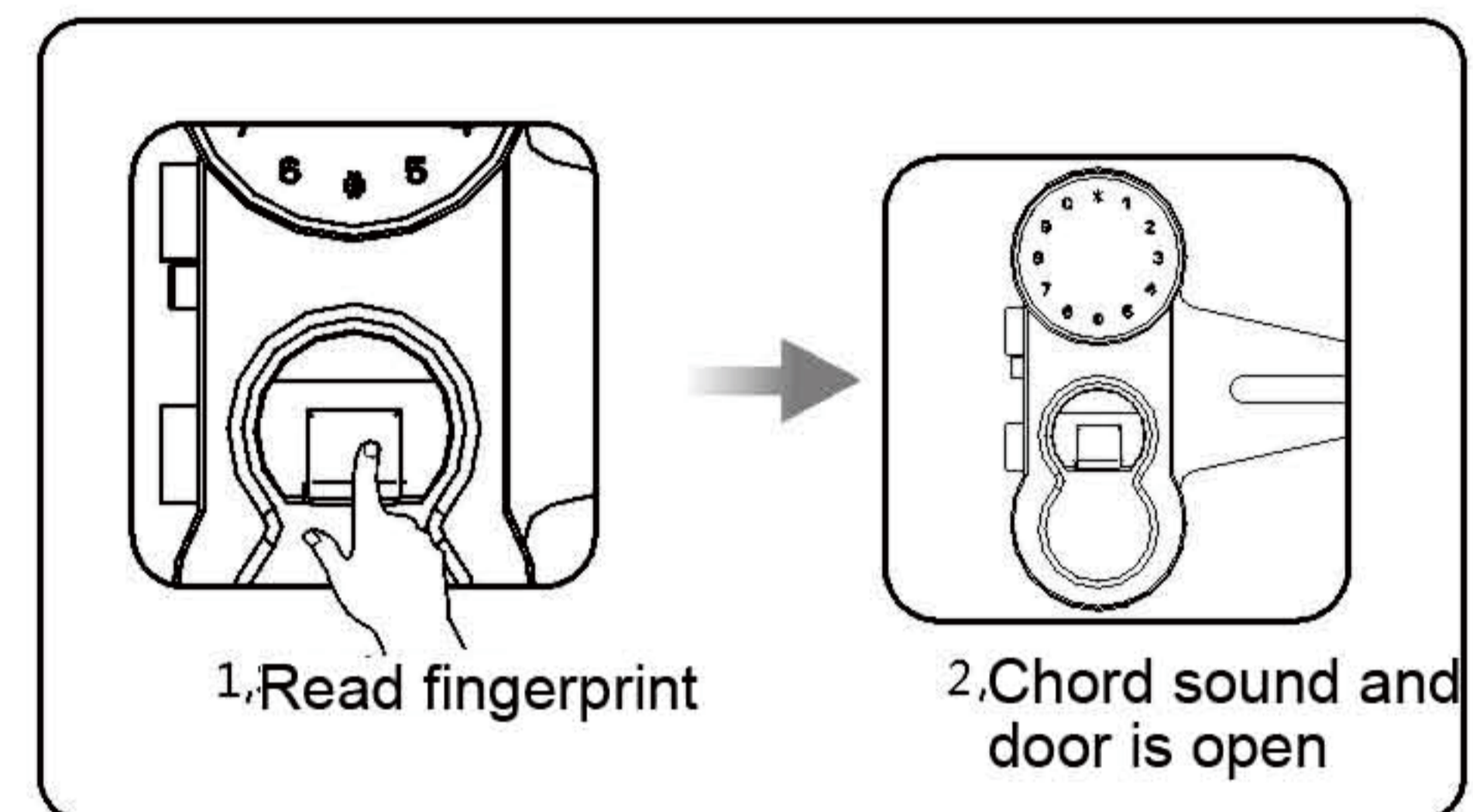
(Extra digits can be added before correct password for high security.)



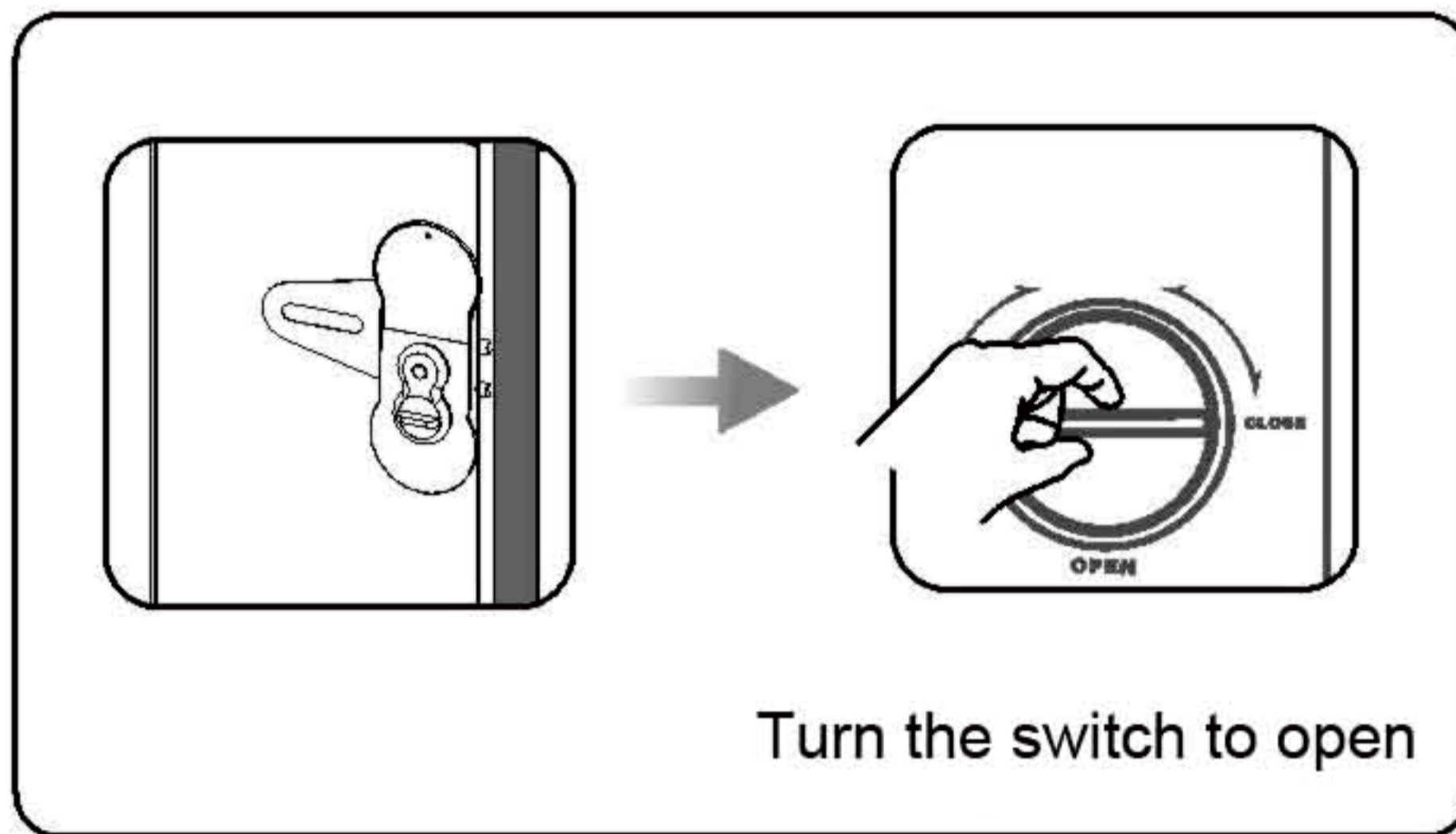
## Open by Card



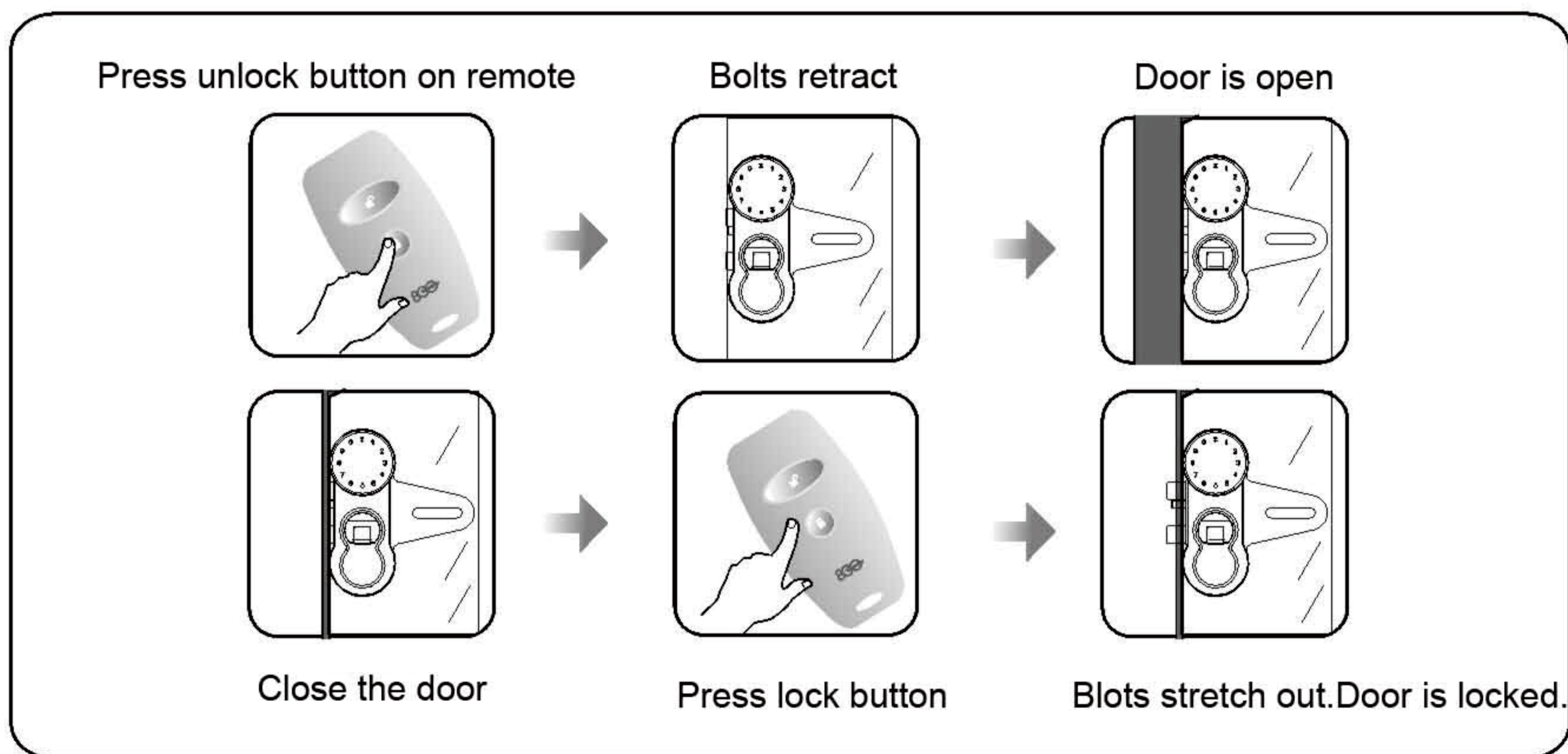
## Open by Fingerprint



## Open from Indoors



## Open/Lock by Remote Control



## Lock from Outdoors

